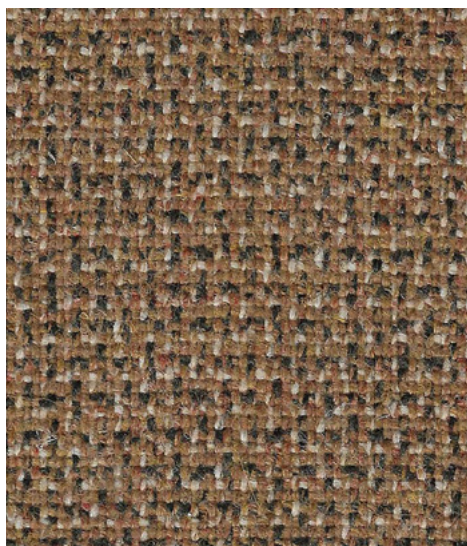


# Main Line Twist

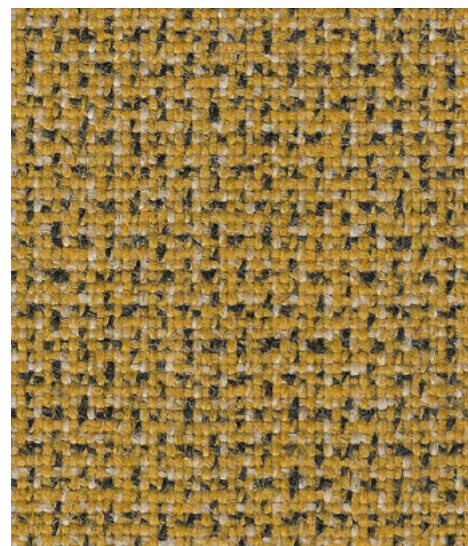
**camira**

# **Sustainable by Design**

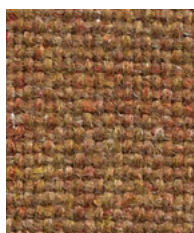
**Made from nature for sustainable interiors, Main Line Twist is a new take on tweed which complements the color palette of Main Line Flax to create effortless textile pairings.**



**Ply**  
MLT10



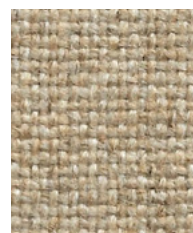
**Fold**  
MLT01



**Perivale**  
MLF59



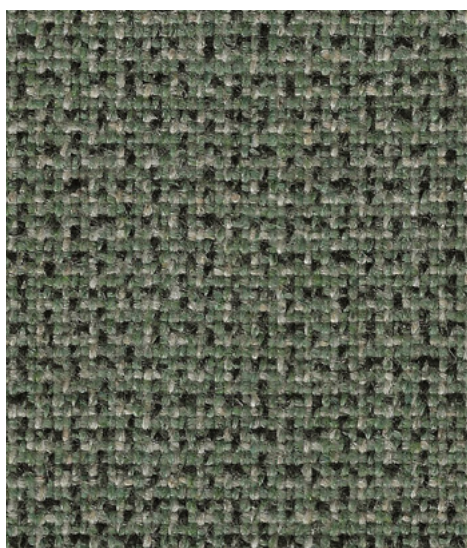
**Morden**  
MLF12



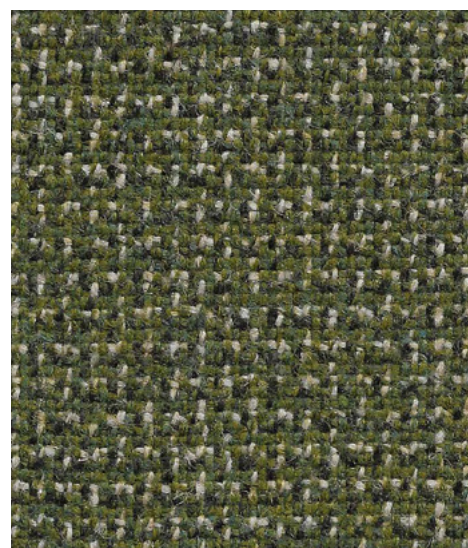
**Upminster**  
MLF20



**Tooting**  
MLF17



**Blend**  
MLT11



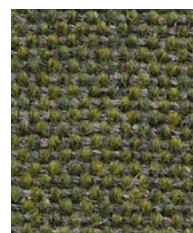
**Creel**  
MLT09



**Monument**  
MLF09



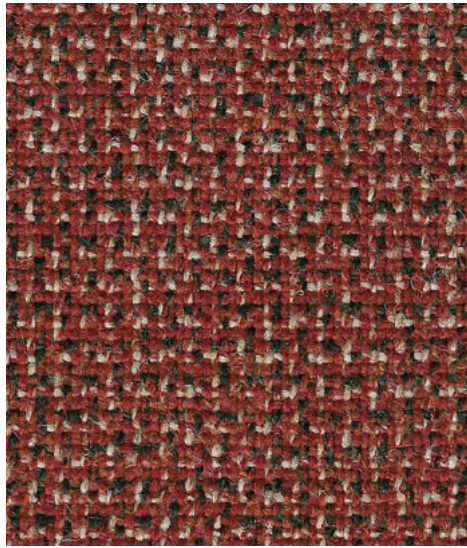
**Greenwich**  
MLF52



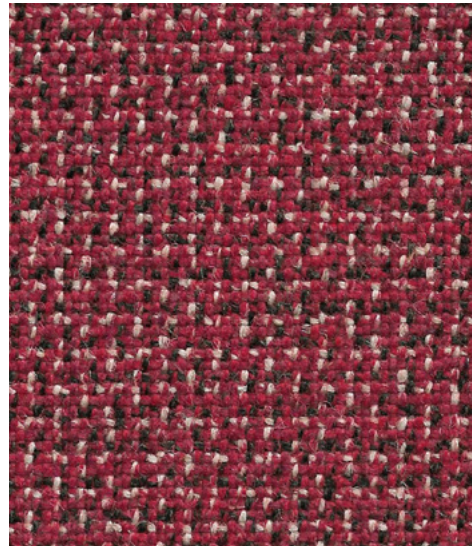
**Moorgate**  
MLF57



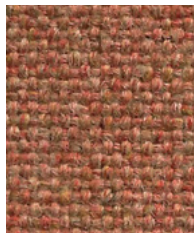
**Kentish**  
MLF56



**Cone**  
MLT02



**Spool**  
MLT03



**Alperton**  
MLF43



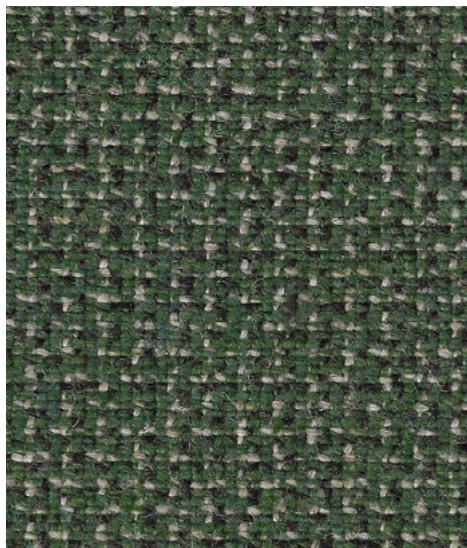
**Barking**  
MLF45



**Kilburn**  
MLF06



**Parsons**  
MLF14



**Card**  
MLT08



**Spin**  
MLT12



**Harrow**  
MLF54



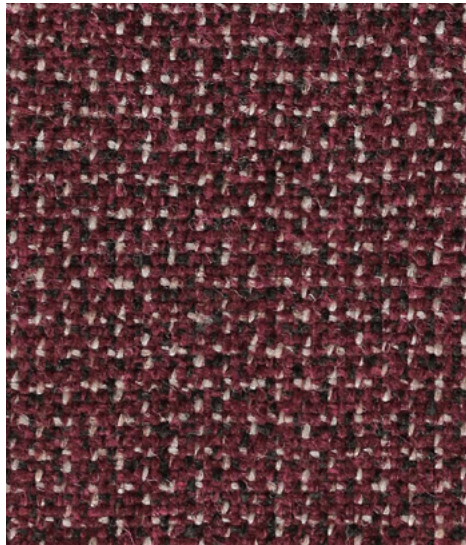
**Hornchurch**  
MLF55



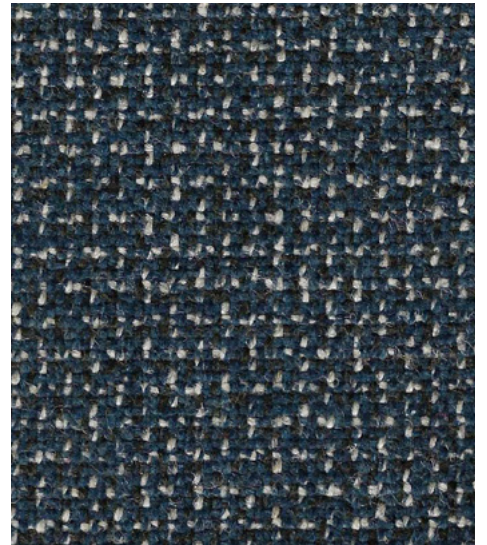
**Redbridge**  
MLF61



**Camden**  
MLF26



**Crimp**  
MLT06



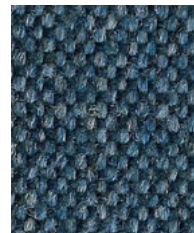
**Fibre**  
MLT05



**Blackwall**  
MLF46



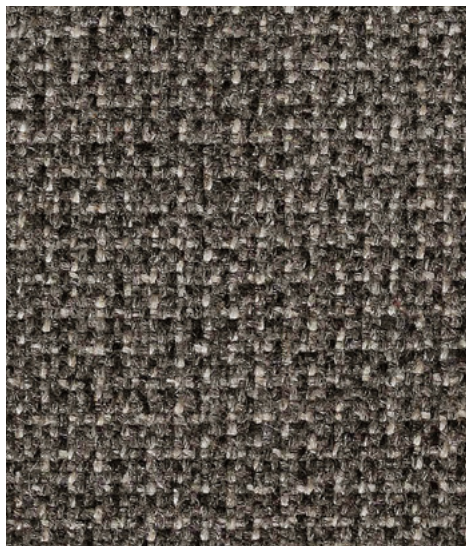
**Northfields**  
MLF40



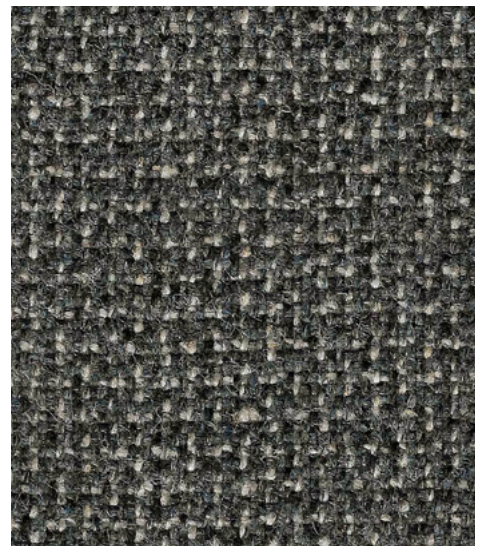
**Clapham**  
MLF49



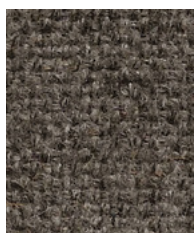
**Embankment**  
MLF50



**Hank**  
MLT13



**Micron**  
MLT14



**Richmond**  
MLF62



**Temple**  
MLF16

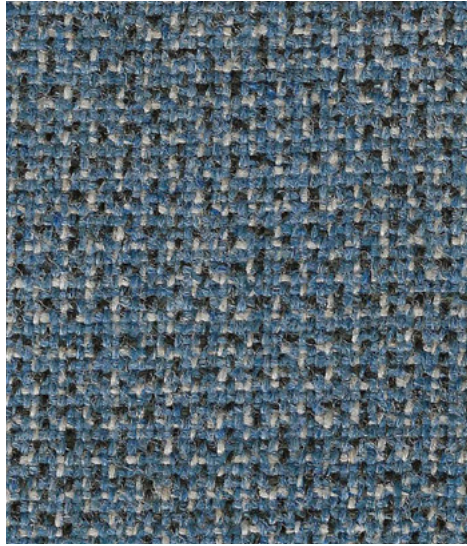


**Stratford**  
MLF64

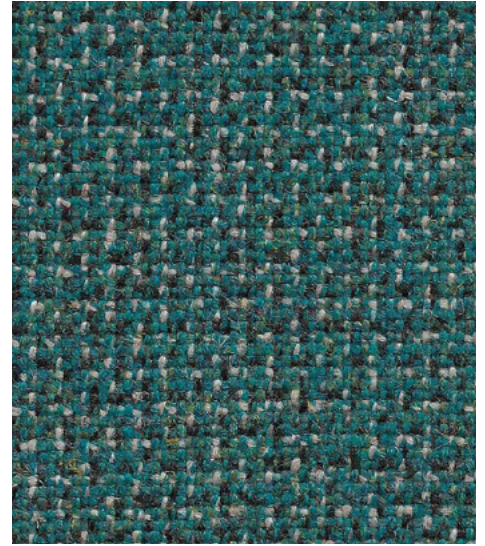


**Whitechapel**  
MLF66

Photographic fabric scans are not color accurate. Always request actual fabric samples before ordering.



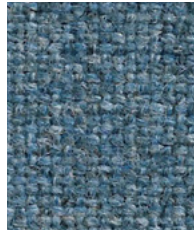
**Yarn**  
MLT04



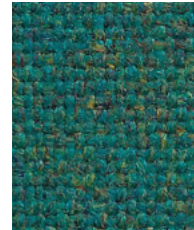
**Scour**  
MLT07



**Waterloo**  
MLF21



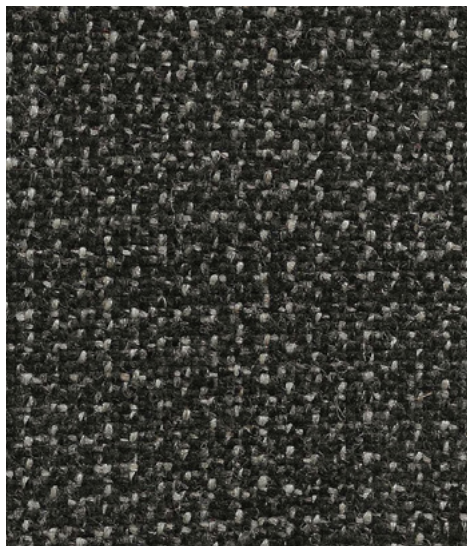
**Epping**  
MLF51



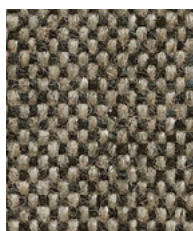
**Stanmore**  
MLF37



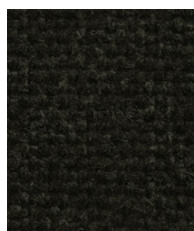
**Bayswater**  
MLF24



**Slub**  
MLT15



**Shadwell**  
MLF63



**Edgware**  
MLF28



Task seating



Lounge seating



Panels

IMO FTP Code  
(Part 8)

Environmental



Acoustic



Year guarantee

Woven from a blend of wool and flax, Main Line Twist is a tweed effect textile with a beautiful, handwoven appearance. Multi-tonal yarns create a fabric with impossible-to-define color detail, rich in warmth and texture.

Made to pair with Main Line Flax, these two textiles are natural partners.



Main Line Twist meets the ACT voluntary Performance Guidelines and is classified for Heavy Duty Upholstery.



## Technical information

### EN

#### Composition

75% Pure New Wool, 25% Flax

#### Environmental

Certified to the EU Ecolabel  
Certified to Indoor Advantage™ Gold  
Rapidly renewable and compostable  
Made from wool and plant fiber

#### Width

54 inches minimum

#### Weight

13 oz/sq yd ±5% (19<sup>1/4</sup> oz/running yd ±5%)

#### Abrasion Resistance\*

ASTM D4157 Wyzenbeek method, Heavy Duty Upholstery  
Independently certified to ≥100,000 double rubs  
Covered by a full and comprehensive 10 year guarantee  
(full details available)

#### Flammability

California Technical Bulletin 117 - 2013  
NFPA 260 + UFAC Class 1  
BS 7176 Medium Hazard  
ASTM E84 Class 1 or A (Adhered)  
ASTM E84 Class 2 or B (Un-adhered)  
IMO FTP Code (Part 8)

*Note: Flammability performance is dependent on components used. Our certificates show what substrates have been used in our tests. For composite tests customers must ensure their complete furniture meets the necessary standards.*

#### Color Fastness to Light

AATCC-16 (40 hours) Class 4

#### Color Fastness to Crocking

AATCC-8 (Dry: 4, Wet: 3)

#### Acoustic Properties

Acoustically transparent, acoustic graphs available upon request.

#### Cleaning

W/S

Clean with a water-based cleaning agent or solvent: Depending on the stain, you can use a dry-cleaning solvent, the foam of a mild detergent, or upholstery shampoo.

\*Abrasion test results exceeding ACT Performance Guidelines are not an indicator of product lifespan. Multiple factors affect fabric durability and appearance retention. We're confident in the durability of our products so we provide a robust 10 year guarantee (full details available). This product is externally certified, details of which are on our website and available from our customer services team. Batch to batch variations in shade may occur within commercial tolerances. We reserve the right to alter technical specifications without notice. The Unregistered Design Rights and the Copyright in all designs are the exclusive property of Camira Fabrics Limited.

### F

#### Composition

75% Pure Laine Vierge, 25% Lin

#### Écologique

Avec le certificat EU Ecolabel  
Certifié à Indoor Advantage™ Gold  
Rapidement renouvelable et compostable  
Fabriqué avec de la Laine et des fibres originaire de Tiges

#### Largeur

54 pouces minimum

#### Poids

13 oz/sq yd ±5% (19<sup>1/4</sup> oz/lin ±5%)

#### Résistance à l'abrasion\*

ASTM D4157 Wyzenbeek method, Heavy Duty Upholstery  
Certificat indépendant ≥100,000 double frottement  
Avec une garantie totale de durabilité de 10 ans  
(renseignements complémentaires disponibles)

#### Flammabilité

California Technical Bulletin 117 - 2013  
NFPA 260 + UFAC Class 1  
BS 7176 Medium Hazard  
ASTM E84 Class 1 or A (Adhered)  
ASTM E84 Class 2 or B (Un-adhered)  
IMO FTP Code (Part 8)

*Notez: La performance de flammabilité dépend des composantes utilisées. Nos certificats indiquent les substrats utilisés dans nos tests. Pour les tests composites, les clients doivent s'assurer que leurs meubles complets satisfont aux normes nécessaires.*

#### Solidité à la Lumière

AATCC-16 (40 heures) Class 4

#### Solidité à la Crocking

AATCC-8 (Sec: 4, Mouillé: 3)

#### Propriétés Acoustiques

Acoustiquement transparent, graphiques acoustiques disponibles sur demande.

#### Nettoyage

W/S

Nettoyer avec un produit d'entretien à base d'eau: en fonction de la tâche, vous pouvez nettoyer à sec, à l'aide d'un détergent ou bien avec du shampooing pour meubles.

\*Les résultats des tests d'abrasion dépassant les directives de performance ACT ne sont pas un indicateur de la durée de vie du produit. De multiples facteurs affectent la durabilité du tissu et la conservation de son apparence. Nous sommes confiants dans la durabilité de nos produits, nous offrons donc une solide garantie de 10 ans (tous les détails sont disponibles). Ce produit est certifié en externe, dont les détails sont sur notre site Web et disponible auprès de notre équipe de service à la clientèle. Des variations de teinte d'un lot à l'autre peuvent se produire dans les tolérances commerciales. Nous nous réservons le droit de modifier les spécifications techniques sans préavis. Les droits de conception non enregistrés et le droit d'auteur sur toutes les conceptions sont la propriété exclusive de Camira Fabrics Limited.

### ES

#### Composición

75% Pura Lana Virgen, 25% Lino

#### Ambiental

Certificado con EU Ecolabel  
Certificado de Indoor Advantage™ Gold  
Rapidamente renovable y compostable  
Producido con lana y fibras naturales

#### Ancho

54 pulgadas mínimo

#### Peso

13 oz/sq yd ±5% (19<sup>1/4</sup> oz/lin.y ±5%)

#### Resistencia a la abrasión\*

ASTM D4157 Wyzenbeek method, Heavy Duty Upholstery  
independientemente del certificado de ≥100,000  
rozamiento doble  
Con garantía de uso 10 años (más información disponible  
bajo consulta)

#### Inflamabilidad

California Technical Bulletin 117 - 2013  
NFPA 260 + UFAC Class 1  
BS 7176 Medium Hazard  
ASTM E84 Class 1 or A (Adhered)  
ASTM E84 Class 2 or B (Un-adhered)  
IMO FTP Code (Part 8)

*Nota: El rendimiento de la inflamabilidad depende de los componentes usados. Nuestros certificados muestran qué substratos se han usado en nuestros tests. Para tests composites nuestros clientes deben asegurar si sus muebles cumplen la normativa al uso.*

#### Solidez a la Luz

AATCC-16 (40 horas) Class 4

#### Solidez al Rozamiento

AATCC-8 (Seco: 4, Húmedo: 3)

#### Acústico Propiedades

Acústicamente transparente, gráficos disponibles bajo petición.

#### Limpieza

W/S

Lavar con un producto de limpieza neutro o solvente: en función de la suciedad o mancha, se puede limpiar con un producto de limpieza en seco, espuma templada o producto de limpieza de sofás.

\*Los resultados de las pruebas de abrasión que exceden las pautas de rendimiento ACT no son un indicador de la vida útil del producto. Múltiples factores afectan la durabilidad y aspecto del tejido. Confiamos en la durabilidad de nuestros productos, por lo que ofrecemos una sólida garantía de 10 años (detalles completos disponibles). Este producto se certifica externamente, todos los detalles están disponibles en nuestra web y el departamento de atención al cliente se los puede facilitar. Pequeñas variaciones de color entre diferentes tintadas son posibles dentro de las tolerancias comerciales. Nos reservamos el derecho a modificar las especificaciones técnicas sin previo aviso. Los derechos de diseño no registrados y el copyright de todos nuestros diseños son propiedad exclusiva de Camira Fabrics Limited.