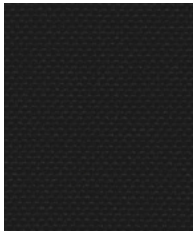


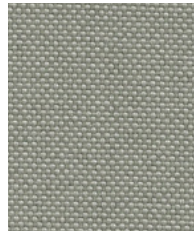
**Quest**

**camira**

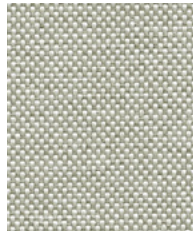
Photographic fabric scans are not color accurate. Always request actual fabric samples before ordering.



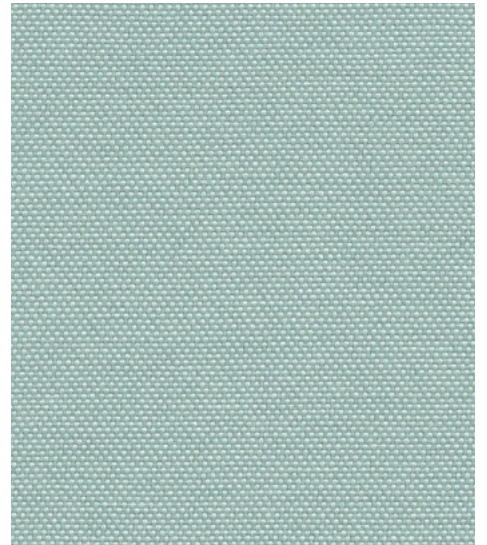
**Depth**  
QUE01



**Fossil**  
QUE02



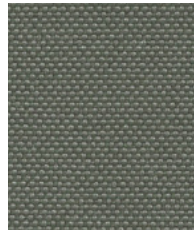
**Barnacle**  
QUE03



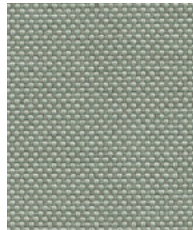
**Ripple**  
QUE07



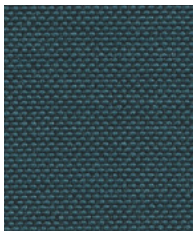
**Mussel**  
QUE04



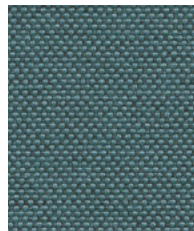
**Quartz**  
QUE05



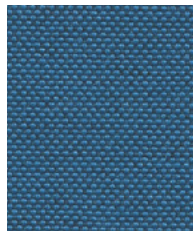
**Shell**  
QUE06



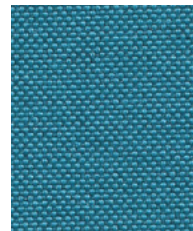
**Whelk**  
QUE08



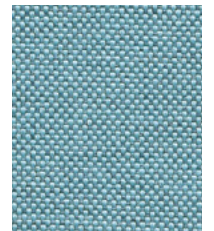
**Limpet**  
QUE09



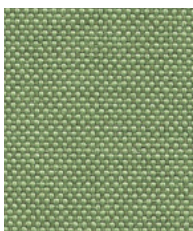
**Rock Pool**  
QUE10



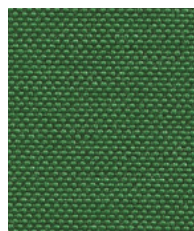
**Wave**  
QUE11



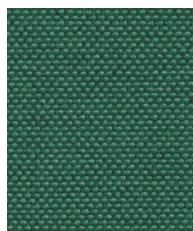
**Tide**  
QUE12



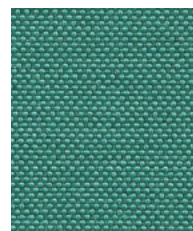
**Sea Grass**  
QUE13



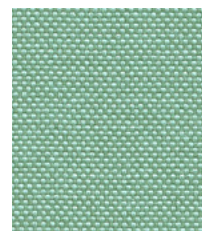
**Algae**  
QUE14



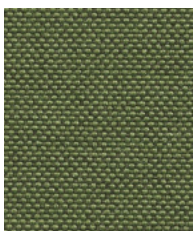
**Kelp**  
QUE15



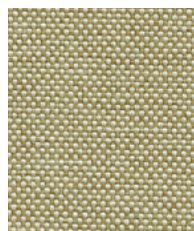
**Sea Foam**  
QUE16



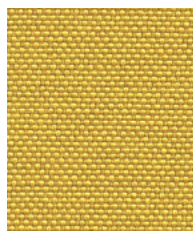
**Urchin**  
QUE17



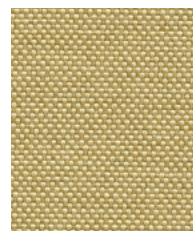
**Abalone**  
QUE18



**Driftwood**  
QUE19



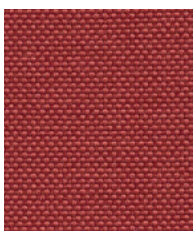
**Sandstone**  
QUE20



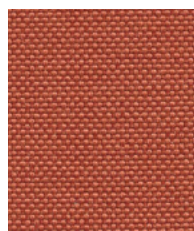
**Beach Comber**  
QUE21



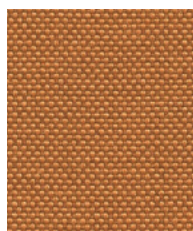
**Salt**  
QUE22



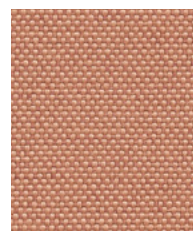
**Cockle**  
QUE23



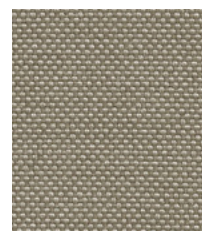
**Crab**  
QUE24



**Clay**  
QUE25



**Shrimp**  
QUE26



**Pebble**  
QUE27



Created with a conscience, Quest is a continuation of our partnership with the SEAQUAL INITIATIVE to combat marine plastic pollution. Waste made wonderful, this lightly textured fabric is woven entirely from post-consumer recycled plastic - transforming it into a fabric as fluid as the waves by which it was inspired, and which it seeks to save. With a hopsack weave enhanced by discat-dyed SEAQUAL® YARN, Quest brings a touch of the ocean's natural beauty to commercial interiors.

For every yard of fabric sold containing SEAQUAL® YARN, we make a give-back donation directly to the SEAQUAL INITIATIVE.



Quest meets the ACT voluntary Performance Guidelines and is classified for Heavy Duty Upholstery.



**STANDARD 100**  
11-62664  
Shirley  
www.oeko-tex.com



SEAQUAL

## Technical information

### EN

#### Composition

100% post-consumer recycled polyester, including 75% SEAQUAL® YARN.

#### Environmental

Certified to the EU Ecolabel  
Certified to STANDARD 100 By OEKO-TEX®  
Certified to Indoor Advantage™ Gold  
Made from 100% post-consumer recycled polyester  
Non metallic dyestuffs

#### Width

54 inches minimum

#### Weight

9<sup>3/4</sup> oz/sq yd ±5% (14<sup>1/2</sup> oz/running yd ±5%)

#### Abrasion Resistance\*

ASTM D4157 Wyzenbeek method.  
Heavy Duty Upholstery independently certified to ≥100,000 double rubs.  
Covered by a full and comprehensive 10 year guarantee (full details available)

#### Flammability

California Technical Bulletin 117 - 2013  
NFPA 260 + UFAC Class 1  
BS 7176 Low Hazard  
ASTM E84 Class 1 or A (Adhered)  
ASTM E84 Class 1 or A (Un-adhered)  
*Note: Flammability performance is dependent on components used. Our certificates show what substrates have been used in our tests. For composite tests customers must ensure their complete furniture meets the necessary standards.*

#### Color Fastness to Light

AATCC-16 (40 hours) Class 4

#### Color Fastness to Crocking

AATCC-8 (Dry: 4, Wet: 3)

#### Acoustic Properties

Acoustically transparent, acoustic graphs available upon request.

#### Bleach Cleanable

ISO 105 E03 color change 4 for dilution factor 1:4 chlorine solution

#### Cleaning

W/S  
Vacuum regularly. Wipe with a damp cloth using a proprietary upholstery shampoo/soap. For deeper cleaning use steam, bleach, alcohol or professionally dry clean. Can be washed at 140F. Full details can be found in our cleaning and disinfection guide.

\*Abrasion test results exceeding ACT Performance Guidelines are not an indicator of product lifespan. Multiple factors affect fabric durability and appearance retention. We're confident in the durability of our products so we provide a robust 10 year guarantee (full details available). This product is externally certified, details of which are on our website and available from our customer services team. Batch to batch variations in shade may occur within commercial tolerances. We reserve the right to alter technical specifications without notice. The Unregistered Design Rights and the Copyright in all designs are the exclusive property of Camira Fabrics Limited.

### F

#### Composition

100% polyester recyclé post consommation, comprenant 75% de fil SEAQUAL®.

#### Écologique

Avec le certificat EU Ecolabel  
Certifié à STANDARD 100 By OEKO-TEX®  
Certifié à Indoor Advantage™ Gold  
Fabriqué en polyester recyclé à 100% après consommation  
Teintures non métalliques

#### Largeur

54 pouces minimum

#### Poids

9<sup>3/4</sup> oz/sq yd ±5% (14<sup>1/2</sup> oz/lin.yd ±5%)

#### Résistance à l'abrasion\*

ASTM D4157-13 Wyzenbeek method.  
Usage intense certificat indépendant ≥100,000 double rubs.  
Avec une garantie totale de durabilité de 10 ans (renseignements complémentaires disponibles)

#### Flammabilité

California Technical Bulletin 117 - 2013  
NFPA 260 + UFAC Class 1  
BS 7176 Low Hazard  
ASTM E84 Class 1 or A (Adhered)  
ASTM E84 Class 1 or A (Un-adhered)  
*Note: La performance de flammabilité dépend des composantes utilisées. Nos certificats indiquent les substrats utilisés dans nos tests. Pour les tests composites, les clients doivent s'assurer que leurs meubles complets satisfont aux normes nécessaires.*

#### Solidité à la Lumière

AATCC-16 (40 heures) Class 4

#### Solidité à la Crocking

AATCC-8 (Sec: 4, Mouillé: 3)

#### Propriétés Acoustiques

Acoustiquement transparent, graphiques acoustiques disponibles sur demande.

#### Nettoyable au javel

ISO 105 E03 changement de couleur 4 pour le facteur de dilution 1:4 solution de chlore

#### Nettoyage

W/S  
Passez l'aspirateur régulièrement. Essayez avec un chiffon humide en utilisant un shampooing / savon pour tissus d'ameublement exclusif. Pour un nettoyage en profondeur, utilisez la vapeur, javel, alcool ou un nettoyage à sec professionnel. Peut être lavé à la machine, programme maximum 140F. Vous trouverez tous les détails dans notre guide de nettoyage et de désinfection.

\*Les résultats des tests d'abrasion dépassant les directives de performance ACT ne sont pas un indicateur de la durée de vie du produit. De multiples facteurs affectent la durabilité du tissu et la conservation de son apparence. Nous sommes confiants dans la durabilité de nos produits, nous offrons donc une solide garantie de 10 ans (tous les détails sont disponibles). Ce produit est certifié en externe, dont les détails sont sur notre site Web et disponible auprès de notre équipe de service à la clientèle. Des variations de teinte d'un lot à l'autre peuvent se produire dans les tolérances commerciales. Nous nous réservons le droit de modifier les spécifications techniques sans préavis. Les droits de conception non enregistrés et le droit d'auteur sur toutes les conceptions sont la propriété exclusive de Camira Fabrics Limited.

### ES

#### Composición

100% polyester reciclado post consume, compuesto de un 75% de hilo SEAQUAL®.

#### Ambiental

Certificado con EU Ecolabel  
Certificado a STANDARD 100 By OEKO-TEX®  
Certificado de Indoor Advantage™ Gold  
Producido con poliéster 100% reciclado tras ser consumido  
Tintes no metálicos

#### Ancho

54 pulgadas mínimo

#### Peso

9<sup>3/4</sup> oz/sq yd ±5% (14<sup>1/2</sup> oz/lin.y ±5%)

#### Resistencia a la abrasión\*

ASTM D4157-13 Wyzenbeek method.  
Uso intenso, certificado independientemente a ≥100,000 double rubs.  
Con garantía total de uso 10 años (más información disponible bajo consulta)

#### Inflamabilidad

California Technical Bulletin 117 - 2013  
NFPA 260 + UFAC Class 1  
BS 7176 Low Hazard  
ASTM E84 Class 1 or A (Adhered)  
ASTM E84 Class 1 or A (Un-adhered)  
*Note: El rendimiento de la inflamabilidad depende de los componentes usados. Nuestros certificados muestran qué substratos se han usado en nuestros tests. Para tests composites nuestros clientes deben asegurar si sus muebles cumplen la normativa al uso.*

#### Solidez a la Luz

AATCC-16 (40 horas) Class 4

#### Solidez al Rozamiento

AATCC-8 (Seco: 4, Húmedo: 3)

#### Acústico Propiedades

Acústicamente transparente, gráficos disponibles bajo petición.

#### Posibilidad lavado con Lejía

ISO 105 E03 cambio color 4 para un factor de disolución 1:4 solución cloro

#### Limpieza

W/S  
Uso aspirador regularmente. Limpiar con un trapo usando jabón y agua o producto limpieza para tapicerías. Para una limpieza más profunda usen vapor, lejía, alcohol o limpieza en seco. Se puede lavar a 140F. Los detalles completos se encuentran en nuestra guía de limpieza y desinfección.

\*Los resultados de las pruebas de abrasión que exceden las pautas de rendimiento ACT no son un indicador de la vida útil del producto. Múltiples factores afectan la durabilidad y aspecto del tejido. Confiamos en la durabilidad de nuestros productos, por lo que ofrecemos una sólida garantía de 10 años (detalles completos disponibles). Este producto se certifica externamente, todos los detalles están disponibles en nuestra web y el departamento de atención al cliente se los puede facilitar. Pequeñas variaciones de color entre diferentes tintadas son posibles dentro de las tolerancias comerciales. Nos reservamos el derecho a modificar las especificaciones técnicas sin previo aviso. Los derechos de diseño no registrados y el copyright de todos nuestros diseños son propiedad exclusiva de Camira Fabrics Limited.