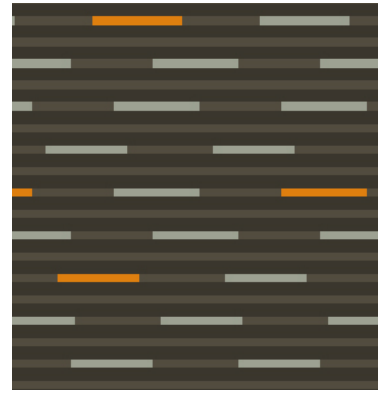


Wired

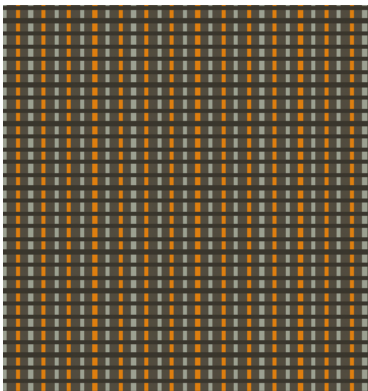
camira



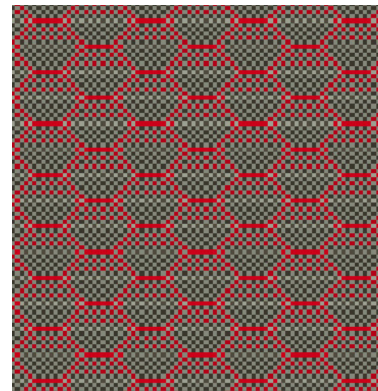
Q754: EFZC44



Q754: EGBC44



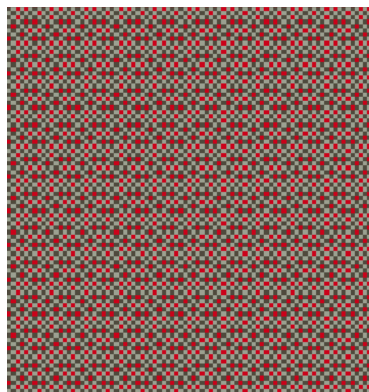
Q754: EGAC44



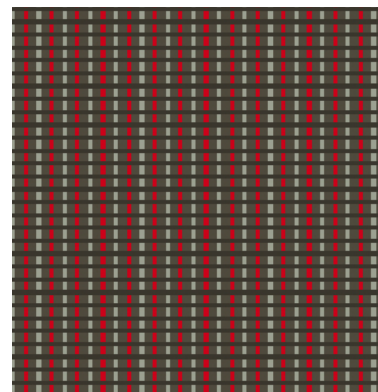
Q754: EGFC42



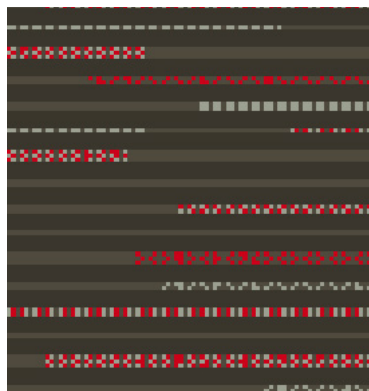
Q754: EGCC44



Q1001: EGGC42



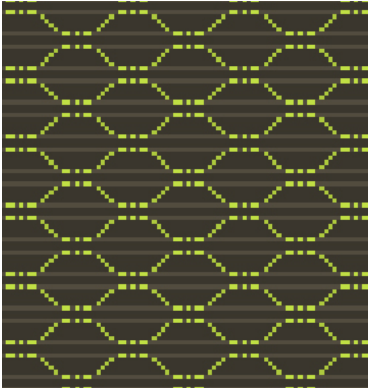
Q754: EGAC42



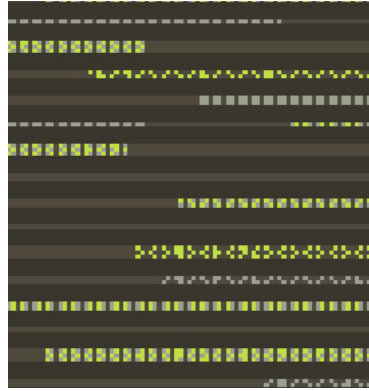
Q754: EGDC42



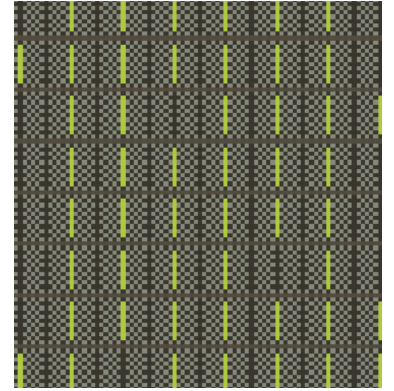
Q754: EGHC42



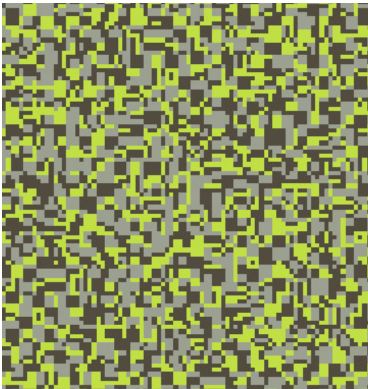
Q754: EGCC45



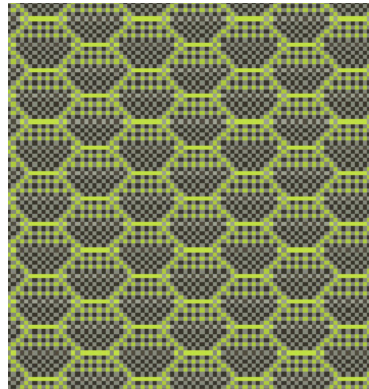
Q754: EGDC45



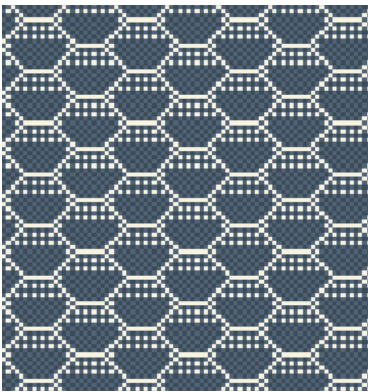
Q754: EFZC45



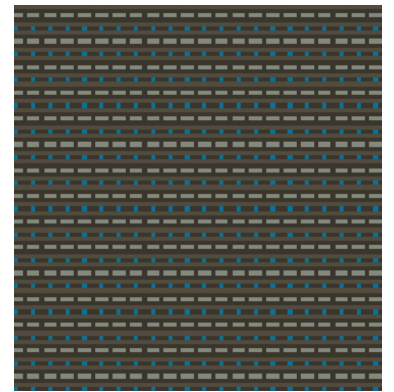
Q1001: EGSC45



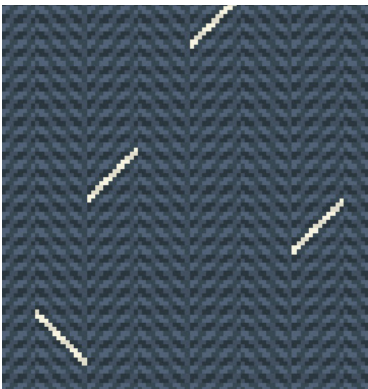
Q754: EGFC45



Q1001: EGNC47



Q754: EGEC46



Q754: EGOC47

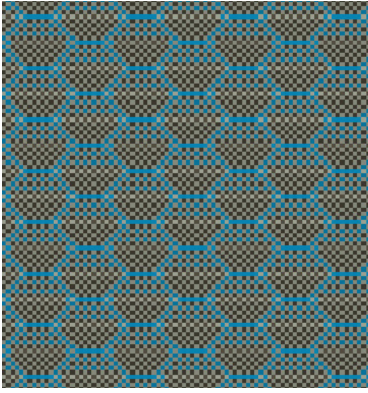


Q754: EGMC47

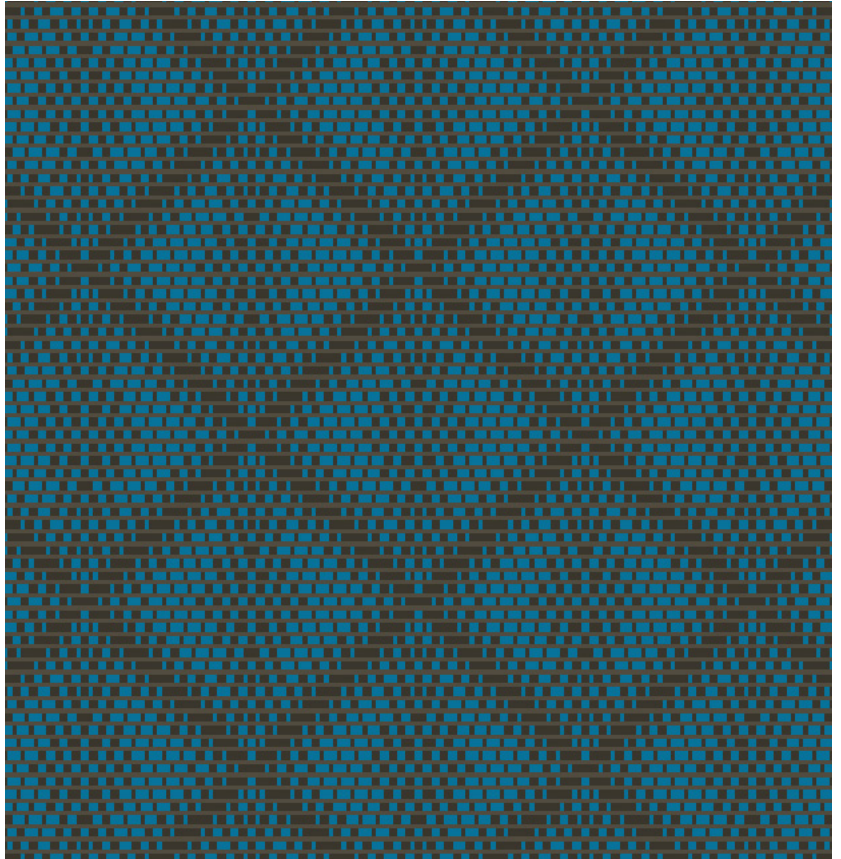


Q754: EGCC47

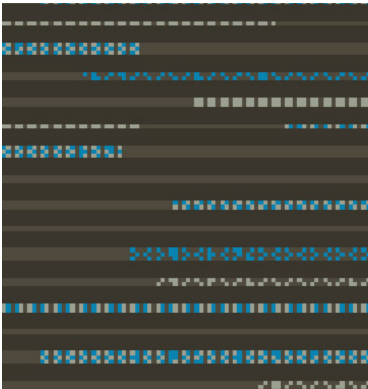
Photographic fabric scans are not color accurate. Always request actual fabric samples before ordering.



Q754: EGFC46



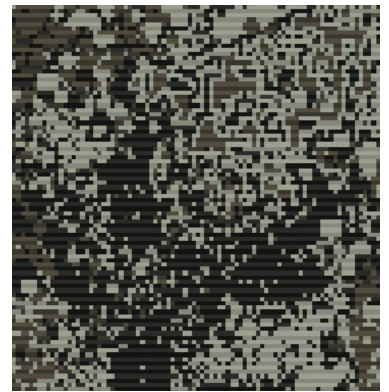
Q754: EGIC46



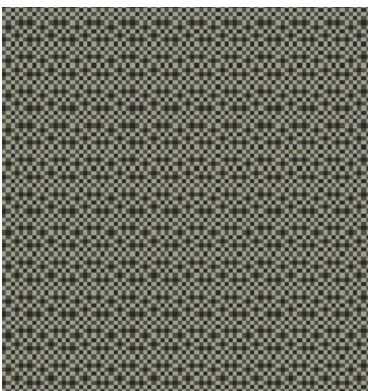
Q754: EGDC46



Q754: EGKC43



Q754: EGJC43



Q1001: EGGC43



Q754: EGLC43

Transport
seating5
Year guarantee

Wired is an intricately detailed fabric collection which subtly moves from one surface texture to another through a carefully constructed mix of pile heights and handles. Some areas of the fabric surface are presented as all cut moquette and others in all loop to create a complex textural transport upholstery which combines both unique aesthetics and high performance.

The collection is designed around small scale textures and patterns with highlight accent colors of muted blues, greens, subdued orange and vivid red set against darker gray grounds. The design effects span illusory, graduated and delicate dappling to set a tone of poise and refinement.

Technical information

EN

Composition

Pile: 85% Wool, 15% Nylon
Ground: 100% Cotton

Width

59 inches minimum

Weight

25^{1/4} oz/sq yd ±5% (41^{3/4} oz/running yd ±5%)

Thickness

0.148 inches (BS 4051)

Abrasion Resistance

≥80,000 Martindale cycles (EN ISO 12947-2)

Flammability*

FMVSS 302

Note: Flammability performance is dependent on components used. Our certificates show what substrates have been used in our tests. For composite tests customers must ensure their complete furniture meets the necessary standards.

Light Fastness

6 (BS EN ISO 105 B02)

Fastness to Rubbing

Wet: 4, Dry: 4 (BS EN ISO 105 X12)

Maintenance

Vacuum regularly. Wipe clean with a damp cloth or shampoo using proprietary upholstery shampoo.

Color Matching

Batch to batch variations in shade may occur within commercial tolerances.

* Flammability performance is dependent on components used. FR post-treatments may be required to meet specific standards. Further information can be provided on request. Post treatments may change the technical performance and appearance of a product.

The Unregistered Design Rights and the Copyright in all designs are the exclusive property of Camira Fabrics Limited.

F

Composition

Surface: 85% Laine, 15% Nylon
Couche 100% Cotton

Largeur

59 pouces minimum

Poids

25^{1/4} oz/sq yd ±5% (41^{3/4} oz/lin.yd ±5%)

Epaisseur

0.148 pouces (BS 4051)

Résistance à l'abrasion

≥80,000 Martindale tours (EN ISO 12947-2)

Flammabilité*

FMVSS 302

Notez: La performance de flammabilité dépend des composantes utilisées. Nos certificats indiquent les substrats utilisés dans nos tests. Pour les tests composites, les clients doivent s'assurer que leurs meubles complets satisfont aux normes nécessaires.

Solidité à la lumière

6 (BS EN ISO 105 B02)

Solidité au frottement

Mouillé: 4, Sec: 4 (BS EN ISO 105 X12)

Nettoyage

Aspirer régulièrement. Essuyer avec une étoffe humide ou nettoyer à l'aide d'un produit approprié pour tissus d'ameublement.

Standardisation des coloris

Variations de coloris d'un bain à un autre peuvent se manifester.

*La performance d'inflammabilité dépend des composantes utilisées. Les traitements postérieurs FR peuvent être nécessaires pour respecter des normes spécifiques. Plus amples renseignements peuvent être fournis sur demande. Les traitements supplémentaires post-production peuvent altérer les performances techniques et l'apparence d'un produit.

The Unregistered Design Rights and the Copyright in all designs are the exclusive property of Camira Fabrics Limited.

ES

Composición

Superficie: 85% Lana, 15% Nylon
Sustrato: 100% Cotton

Ancho

59 pulgadas mínimo

Peso

25^{1/4} oz/sq yd ±5% (41^{3/4} oz/lin.y ±5%)

Espesor

0.148 pulgadas (BS 4051)

Resistencia a la abrasión

≥80,000 Martindale ciclos (EN ISO 12947-2)

Inflamabilidad*

FMVSS 302

Nota: El rendimiento de la inflamabilidad depende de los componentes usados. Nuestros certificados muestran qué substratos se han usado en nuestros tests. Para tests compuestos nuestros clientes deben asegurar si sus muebles cumplen la normativa al uso.

Solidez a la luz

6 (BS EN ISO 105 B02)

Solidez al rozamiento

Húmedo: 4, Seco: 4 (BS EN ISO 105 X12)

Limpieza

Limpiar con aspiradora frecuentemente. Bien lavar con un paño húmedo o con un champú apropiado para tapicería.

Continuidad de colores

Cada tintada puede tener pequeñas variaciones en el tono dentro de las tolerancias comerciales aceptadas.

* El rendimiento de la inflamabilidad depende de los componentes utilizados. Post-tratamientos de FR pueden ser requeridos para cumplir con estándares específicos. Más información se puede proporcionar a petición. Los tratamientos adicionales pueden cambiar el rendimiento técnico y la apariencia de un producto.

The Unregistered Design Rights and the Copyright in all designs are the exclusive property of Camira Fabrics Limited.