

The image shows a close-up, top-down view of a wool fabric with a complex, textured pattern. The pattern consists of interlocking, slightly irregular shapes in shades of dark green and grey, creating a dense, woven appearance. The lighting is even, highlighting the fine texture of the wool fibers.

Wired

**Farboptionen für
Wired-Mokett aus Wolle**

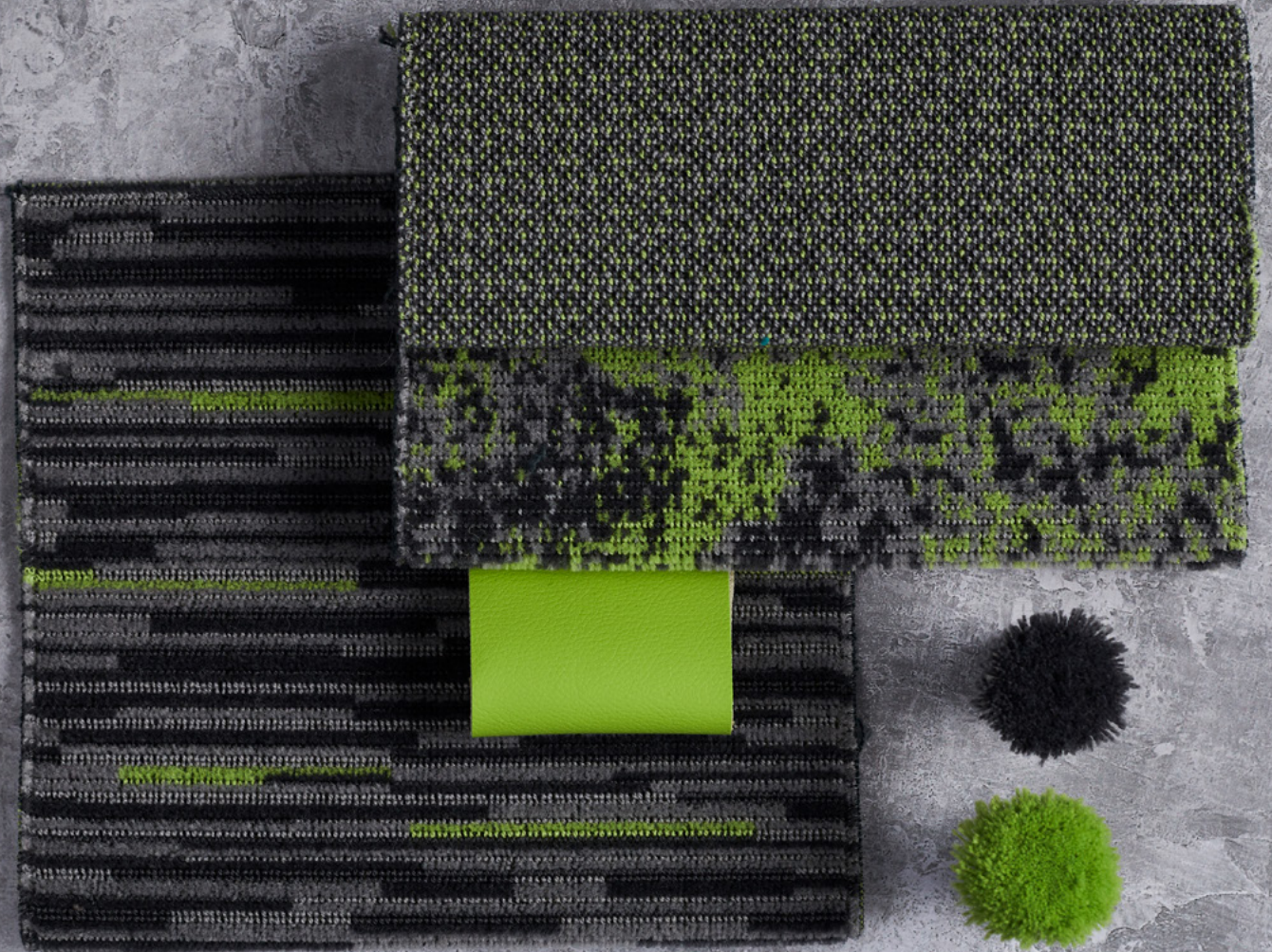
camira



Mit Liebe zum Detail entworfen und wirkungsvoll gefertigt ist Wired ein auf den ersten Blick ansprechender Stoff mit subtiler Tiefe.

Mit unterschiedlichen Florhöhen, die eine unwiderstehliche Haptik ergeben, und kleinformatischen Mustern mit Akzentfarben vereint jedes Design der Kollektion Raffinesse mit Modernität und einzigartige Ästhetik mit hoher Leistungsfähigkeit.

Als wirklich zeitloser Stoff ist Wired in einer Auswahl zeitgemäßer und klassischer Farben erhältlich. Von Electric Lime bis Ferrari-Rot, für jeden Fahrzeuginnenraum wird eine passende Farbe geboten.



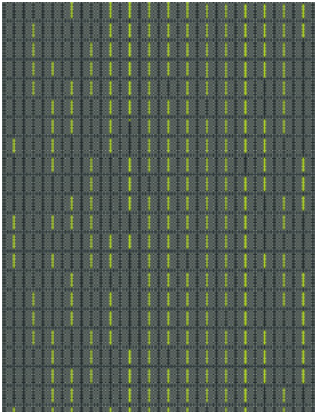
Electric Lime

Vita
Spring, ITA40

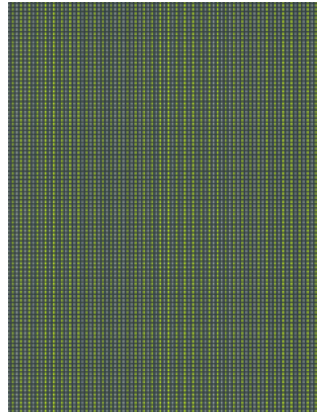
Vita
Beetle, ITA47

Vita
Pigeon, ITA45

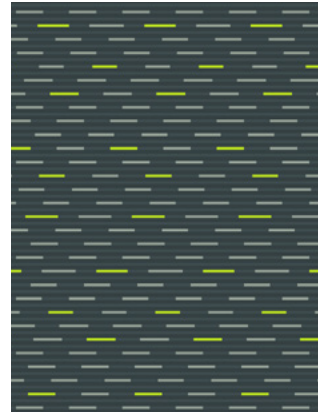
**Miteinander
harmonisierende
Farben**



EFZC45 (Q150)



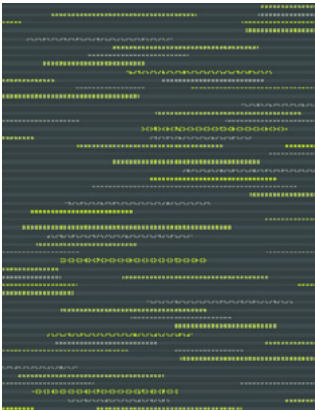
EGAC45 (Q150)



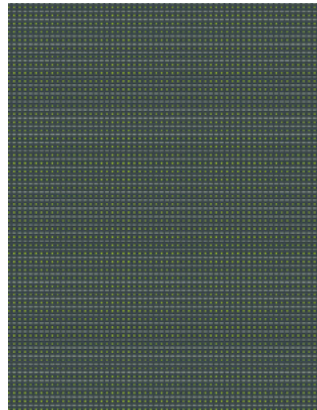
EGBC45 (Q150)



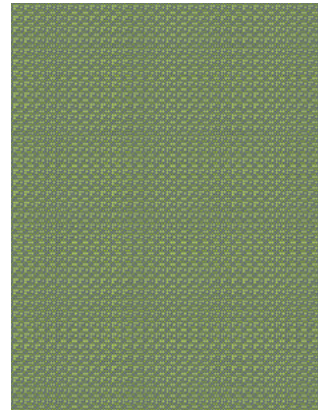
EGCC45 (Q150)



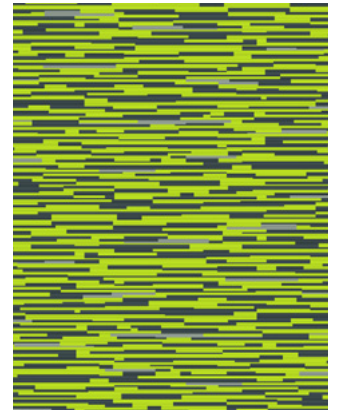
EGDC45 (Q150)



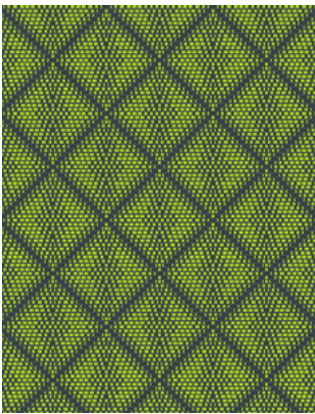
EGEC45 (Q150)



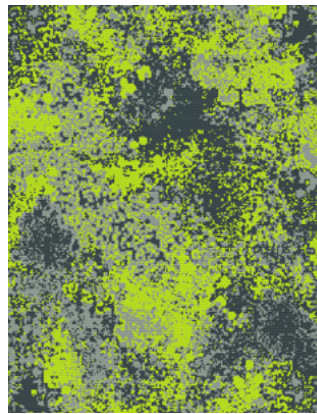
EGGC45 (Q66)



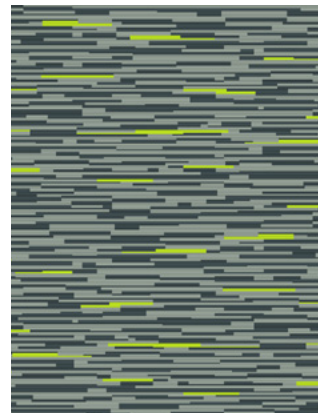
EGHC45 (Q150)



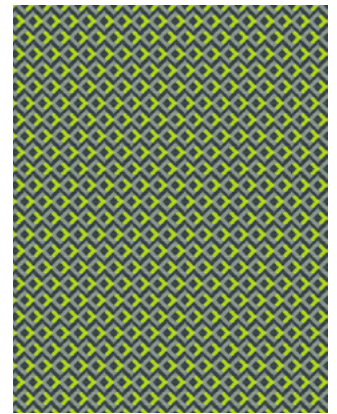
EGIC45 (Q150)



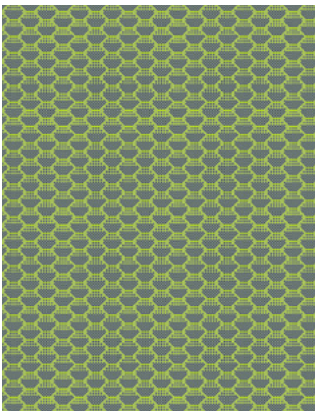
EGJC45 (Q150)



EGKC45 (Q150)



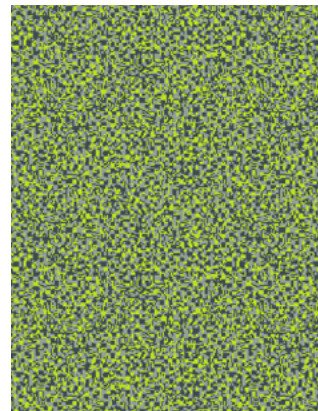
EGMC45 (Q150)



EGFC45 (Q150)
EGNC45 (Q66)



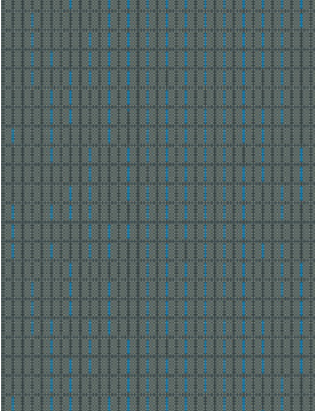
EGOC45 (Q150)



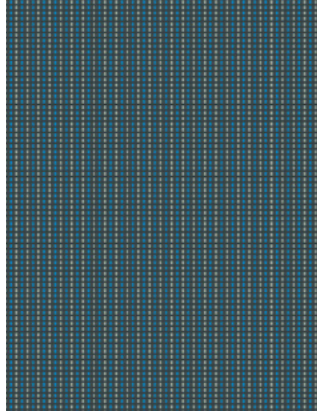
EGSC45 (Q66)



EGLC45 (Q150)



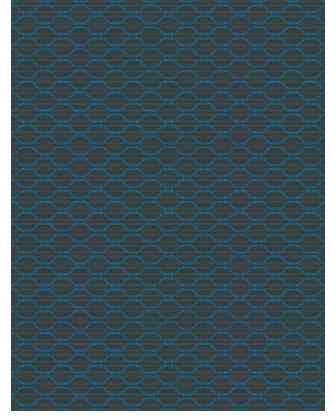
EFZC46 (Q150)



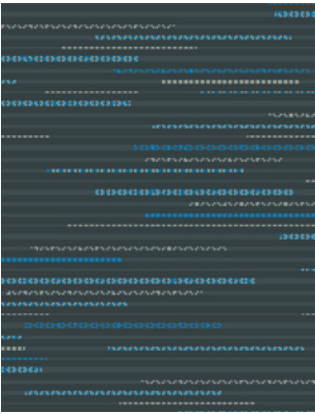
EGAC46 (Q150)



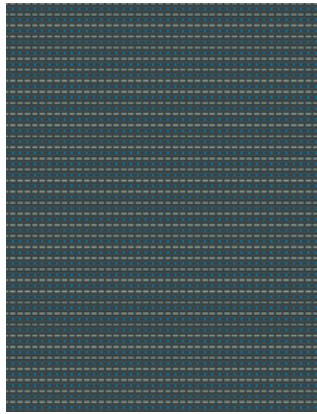
EGBC46 (Q150)



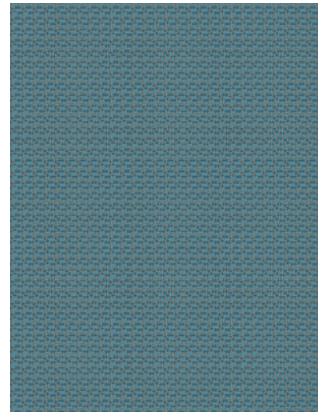
EGCC46 (Q150)



EGDC46 (Q150)



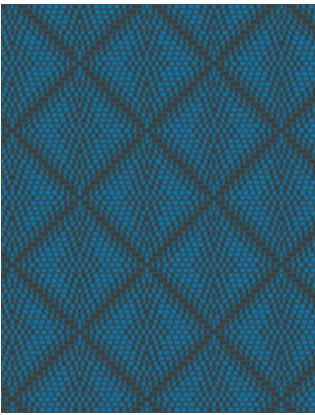
EGEC46 (Q150)



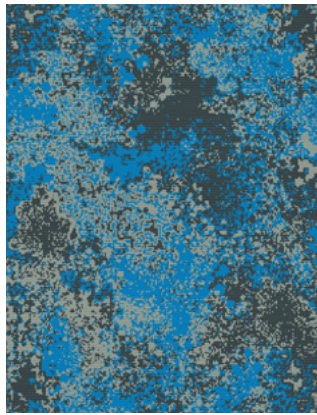
EGGC46 (Q66)



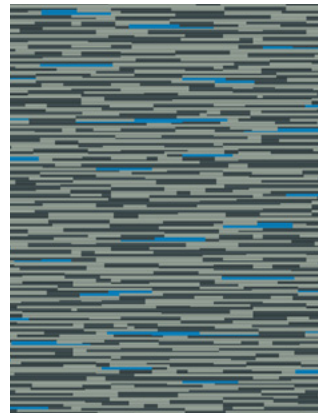
EGHC46 (Q150)



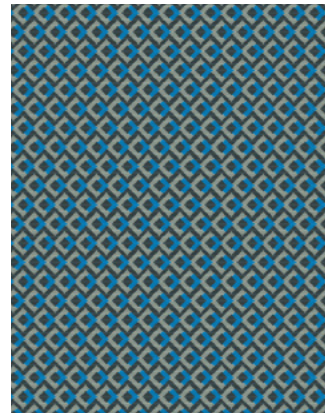
EGIC46 (Q150)



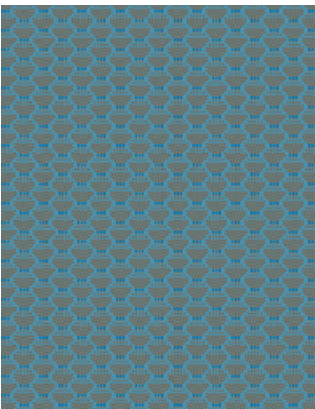
EGJC46 (Q150)



EGKC46 (Q150)



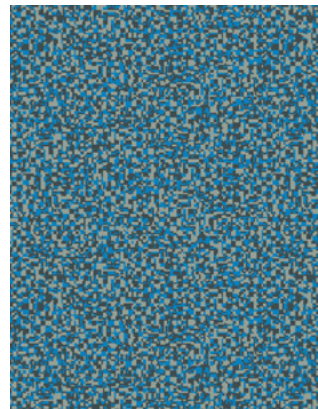
EGMC46 (Q150)



EGFC46 (Q150)
EGNC46 (Q66)



EGOC46 (Q150)



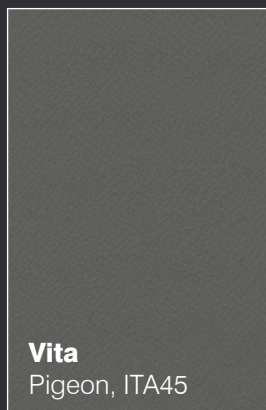
EGSC46 (Q66)



EGLC46 (Q150)



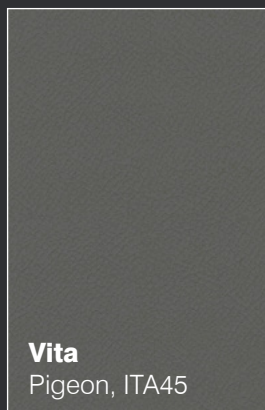
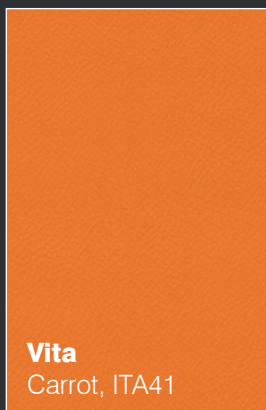
Pazifikblau



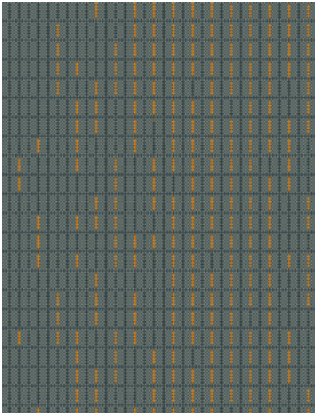
**Miteinander
harmonisierende
Farben**



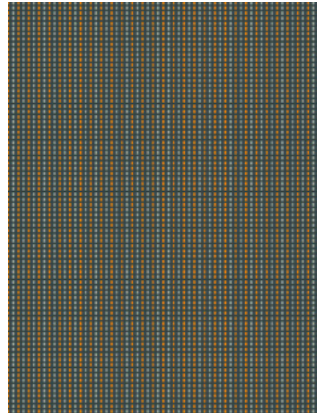
Bernsteingelb



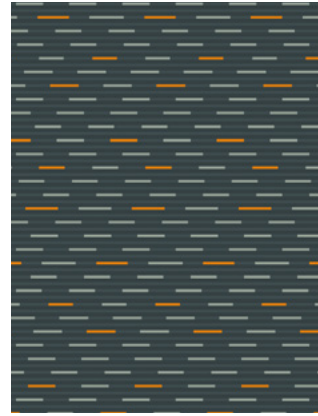
**Miteinander
harmonisierende
Farben**



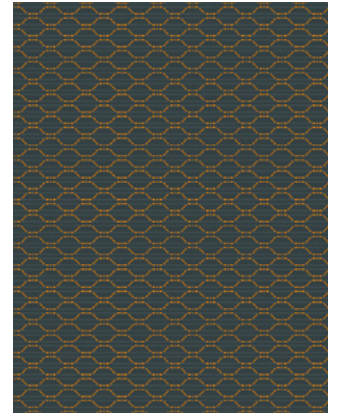
EFZC44 (Q150)



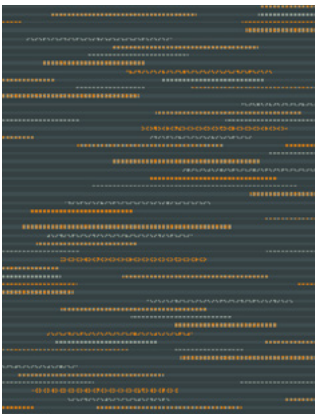
EGAC44 (Q150)



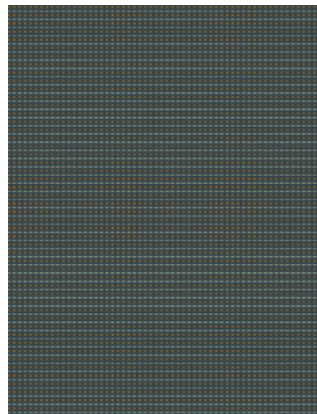
EGBC44 (Q150)



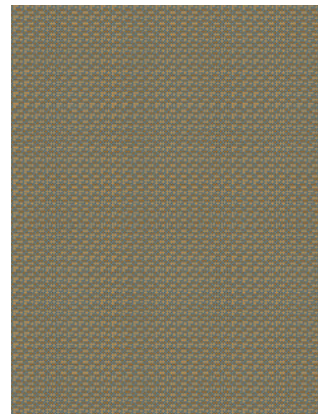
EGCC44 (Q150)



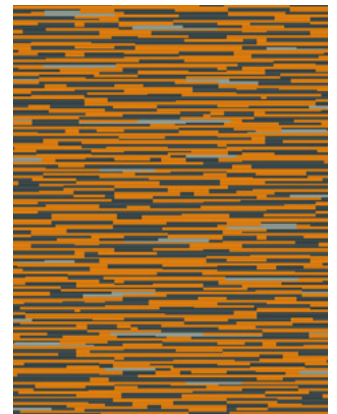
EGDC44 (Q150)



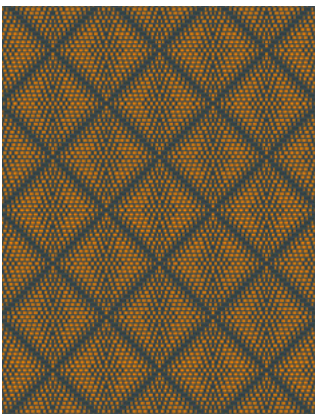
EGEC44 (Q150)



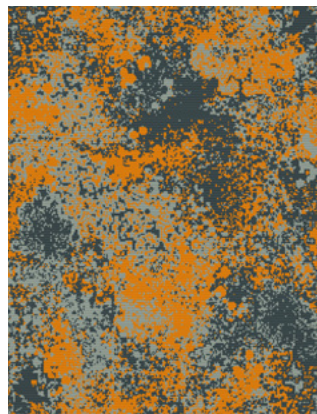
EGGC44 (Q66)



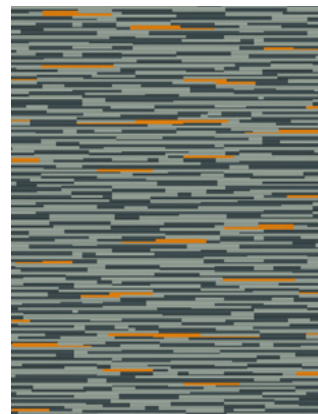
EGHC44 (Q150)



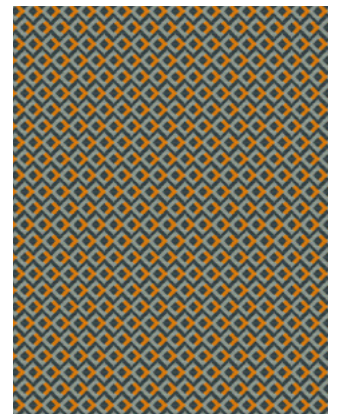
EGIC44 (Q150)



EGJC44 (Q150)



EGKC44 (Q150)



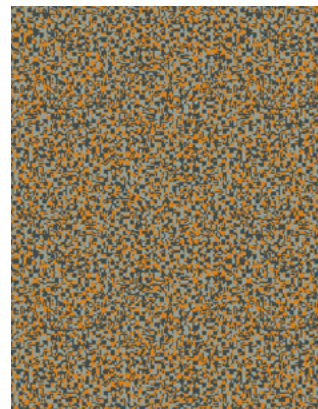
EGMC44 (Q150)



EGFC44 (Q150)
EGNC44 (Q66)



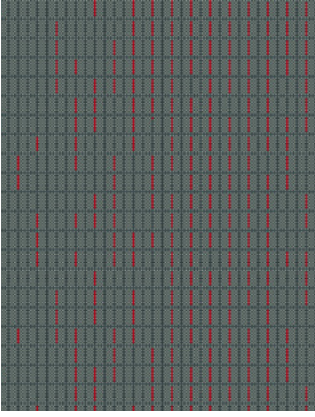
EGOC44 (Q150)



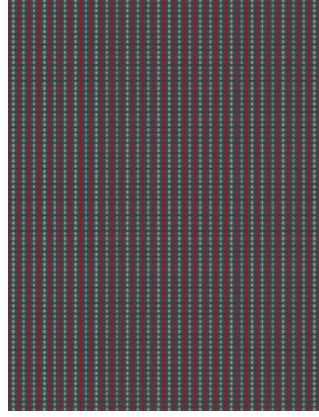
EGSC44 (Q66)



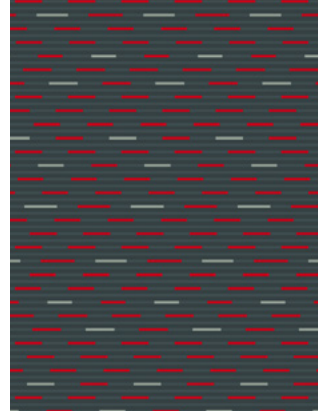
EGLC44 (Q150)



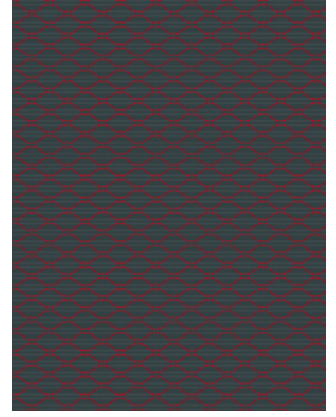
EFZC42 (Q150)



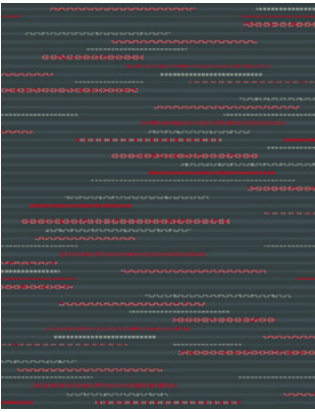
EGAC42 (Q150)



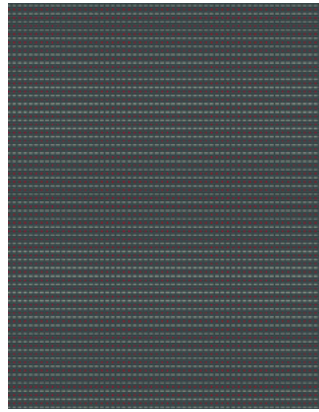
EGBC42 (Q150)



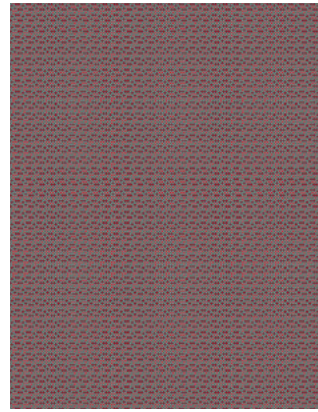
EGCC42 (Q150)



EGDC42 (Q150)



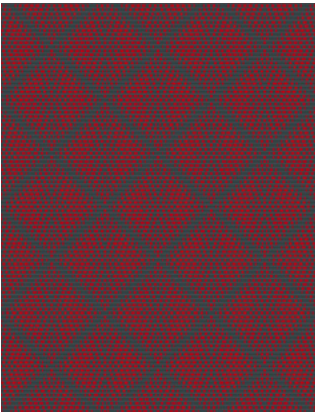
EGEC42 (Q150)



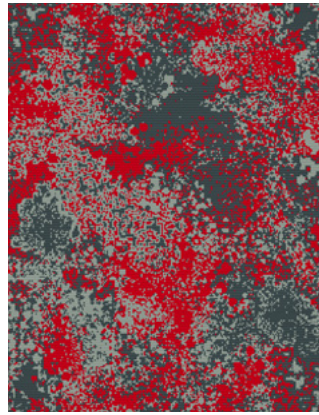
EGGC42 (Q66)



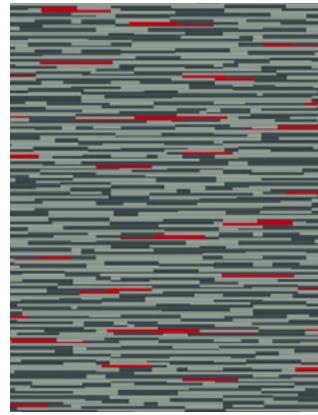
EGHC42 (Q150)



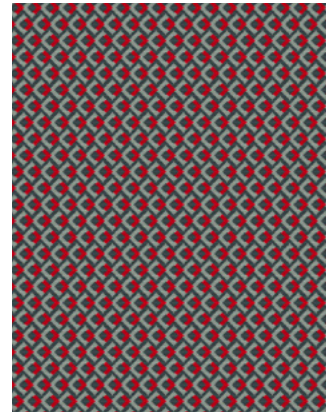
EGIC42 (Q150)



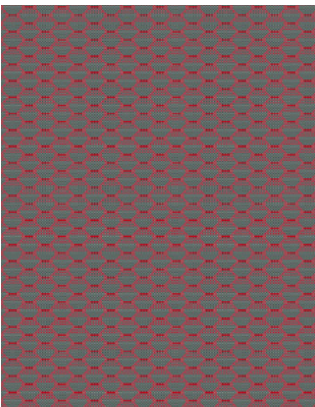
EGJC42 (Q150)



EGKC42 (Q150)



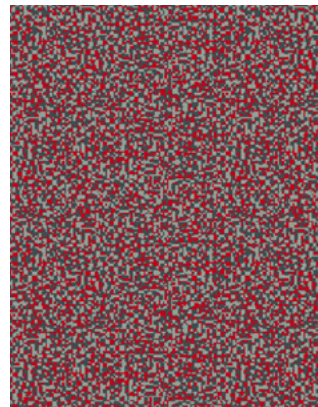
EGMC42 (Q150)



EGFC42 (Q150)
EGNC42 (Q66)



EGOC42 (Q150)



EGSC42 (Q66)



EGLC42 (Q150)



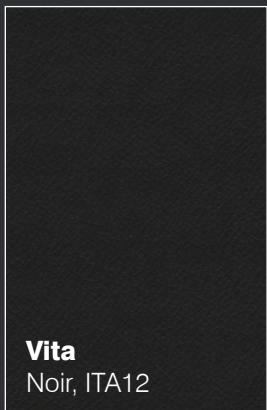
Ferrari-Rot



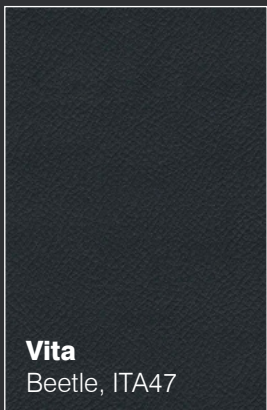
**Miteinander
harmonisierende
Farben**



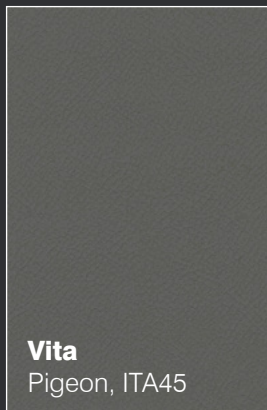
Klassisches Grau



Vita
Noir, ITA12

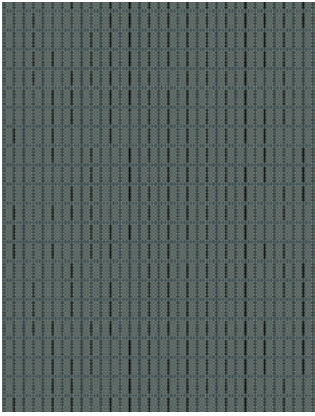


Vita
Beetle, ITA47

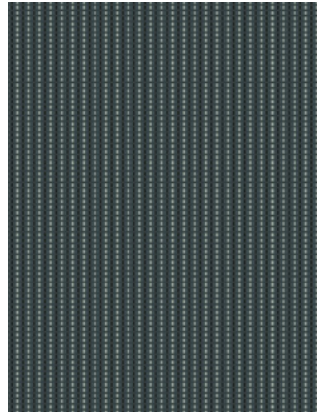


Vita
Pigeon, ITA45

**Miteinander
harmonisierende
Farben**



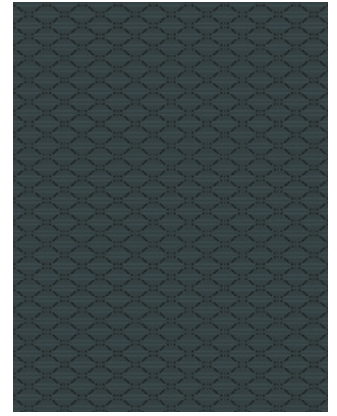
EFZC43 (Q150)



EGAC43 (Q150)



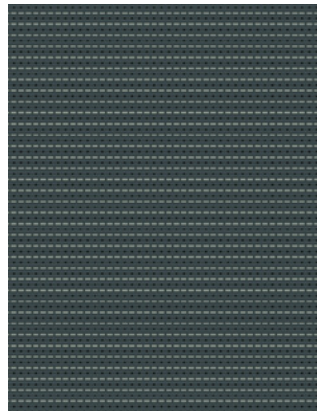
EGBC43 (Q150)



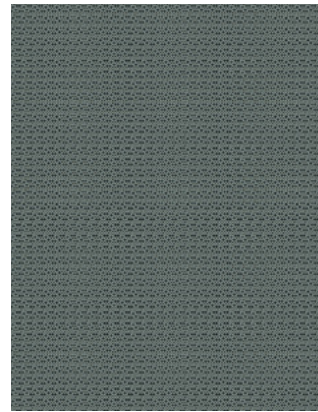
EGCC43 (Q150)



EGDC43 (Q150)



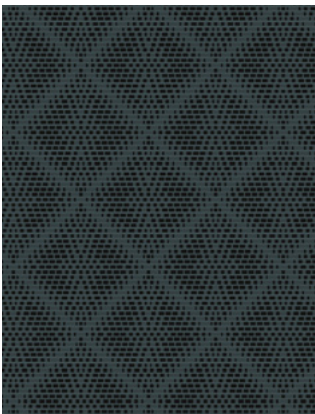
EGEC43 (Q150)



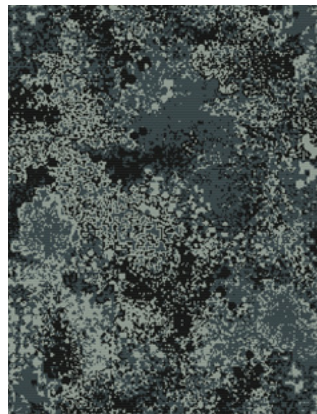
EGGC43 (Q66)



EGHC43 (Q150)



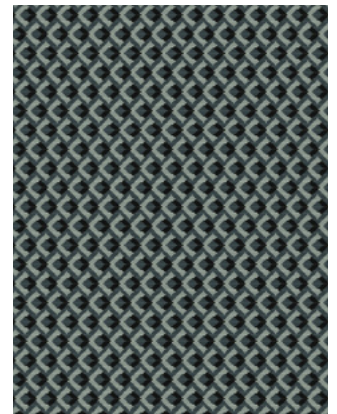
EGIC43 (Q150)



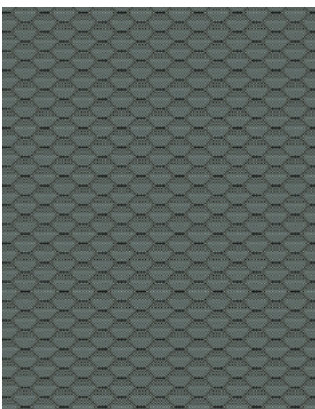
EGJC43 (Q150)



EGKC43 (Q150)



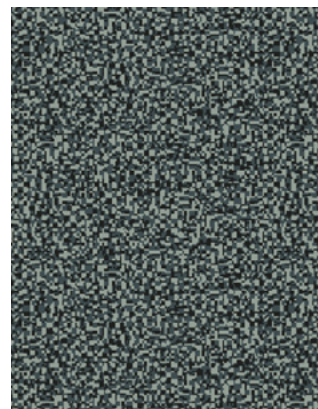
EGMC43 (Q150)



EGFC43 (Q150)
EGNC43 (Q66)



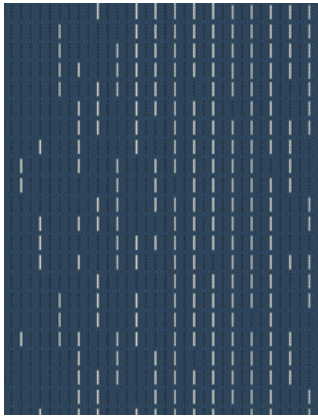
EGOC43 (Q150)



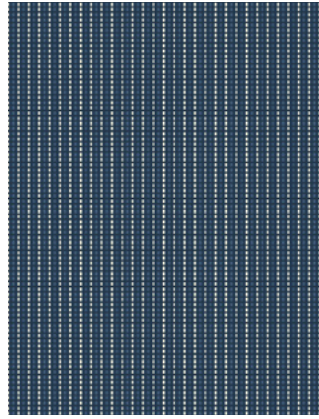
EGSC43 (Q66)



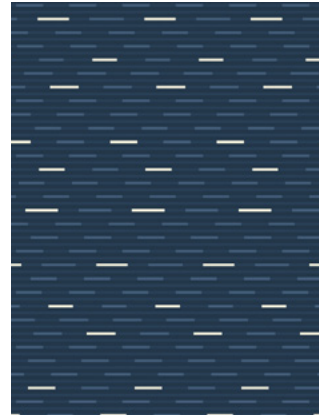
EGLC43 (Q150)



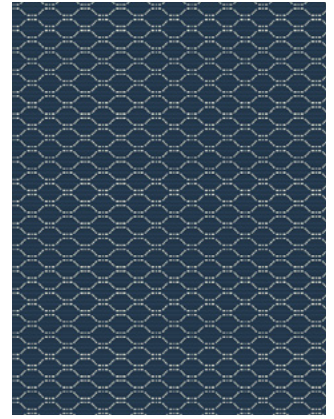
EFZC47 (Q150)



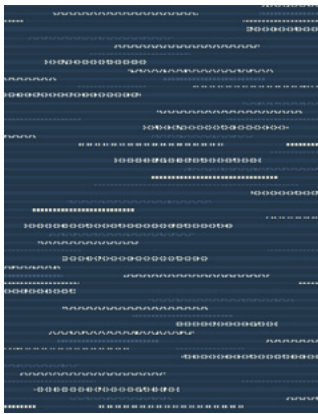
EGAC47 (Q150)



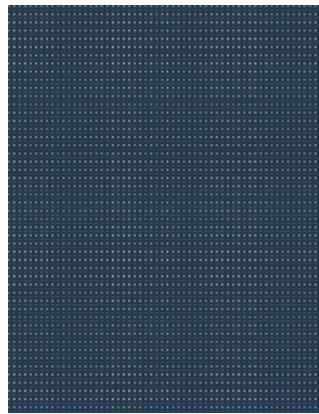
EGBC47 (Q150)



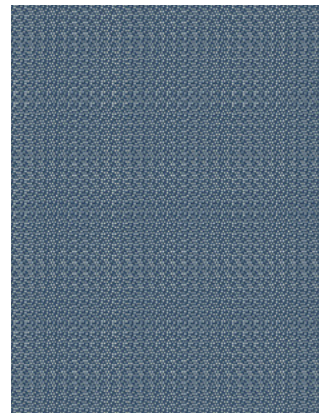
EGCC47 (Q150)



EGDC47 (Q150)



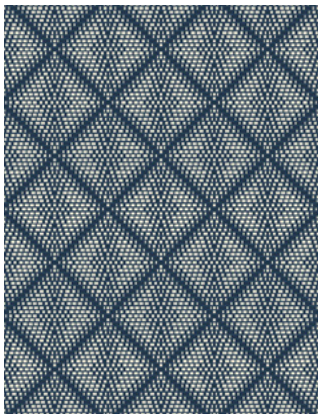
EGEC47 (Q150)



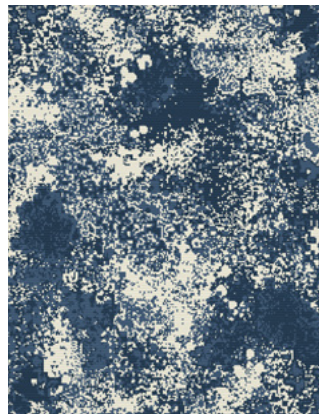
EGGC47 (Q66)



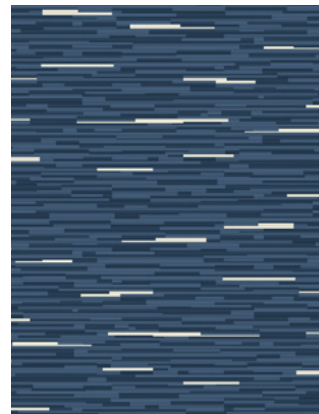
EGHC47 (Q150)



EGIC47 (Q150)



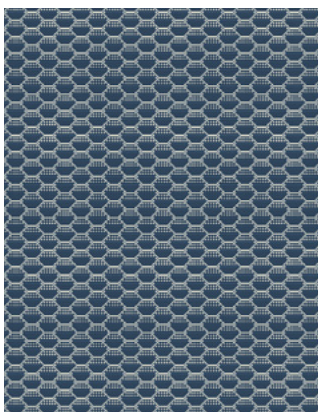
EGJC47 (Q150)



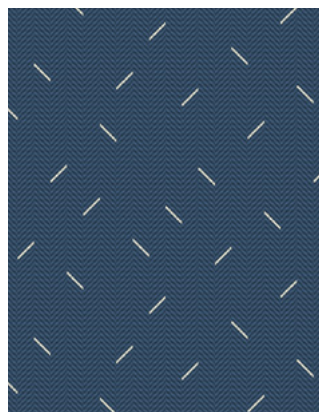
EGKC47 (Q150)



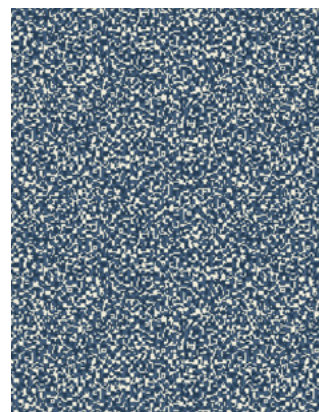
EGMC47 (Q150)



EGFC47 (Q150)
EGNC47 (Q66)



EGOC47 (Q150)



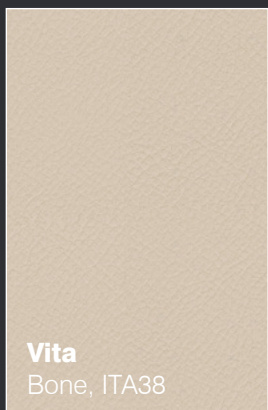
EGSC47 (Q66)



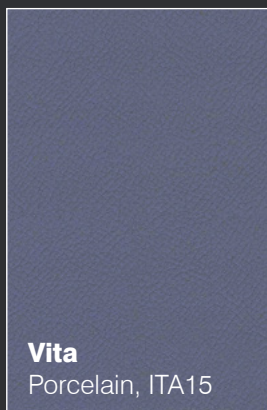
EHCC47 (Q150)



Jeansblau



Vita
Bone, ITA38



Vita
Porcelain, ITA15

**Miteinander
harmonisierende
Farben**

Spezifikation

Wired



Transport
seating



Year guarantee

Wired ist unsere neue Kollektion leistungsfähiger Bezugstoffe, die sich durch eine besonders aufwändige Verarbeitung mit vielfältigen Texturen und Webtechniken auszeichnet.

Die Designs bei Wired entstehen auf Basis unterschiedlicher Mokett-Gewebe und verbinden eine einzigartige Ästhetik mit hoher Strapazierfähigkeit. Die Stoffe werden individuell nach Kundenwünschen gefertigt und bieten eine Auswahl von 17 Mustern mit Designeffekten, die von illusionär über gestuft bis hin zu dezent getupft für einen ausbalancierten und eleganten Effekt reichen.

Technische Spezifikation

Zusammensetzung

Oberfläche: 85% Wolle, 15% Nylon

Trägergewebe: 100% Baumwolle

Breite

150 cm nutzbare Breite

Gewicht

1001 Group: 780 g/m² ±5%

745 Group: 820 g/m² ±5%

Scheuerfestigkeit

≥80,000 Martindale Scheuertouren
(ISO 12947)

Feuersicherung

ECE Reg 118 Annexes 7 & 8

FMVSS 302

Bemerkung: Die Schwerentflammbarkeit hängt von den verwendeten Komponenten ab. Die Flammschutzleistung basiert auf der angewendeten Flammschutzbehandlung

Lichteuchtigkeit

6 (ISO 105 - B02)

Reibechtheit

Nass 4, Trocken: 4 (ISO 105 - X12)

Reinigung

Regelmässig staubsaugen. Dazu mit einem feuchten Tuch abwischen, oder mit einem speziellen Polsterschaum behandeln.

[Online ansehen](#)



