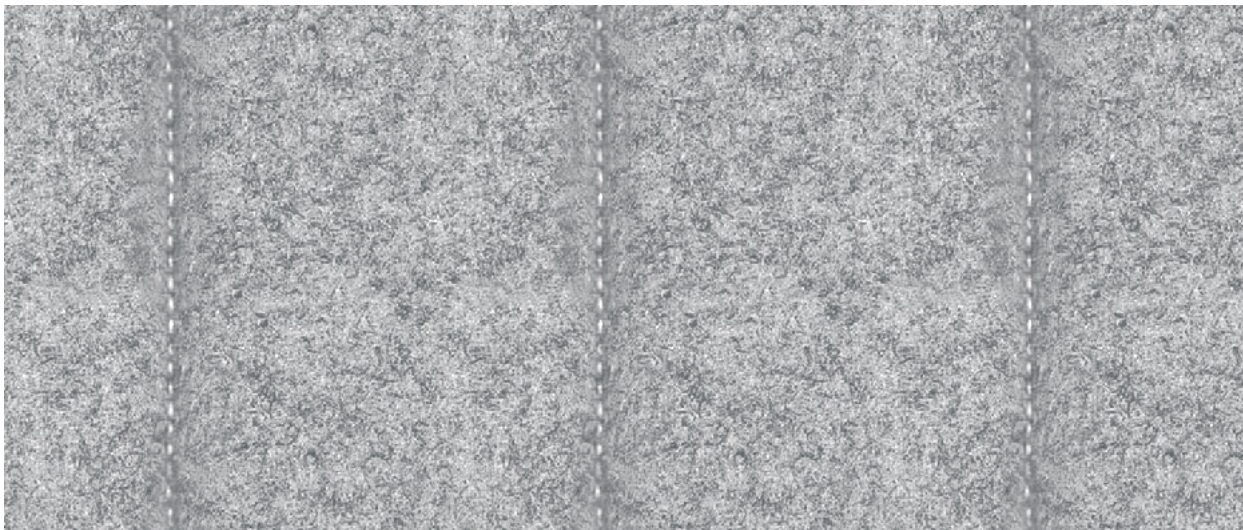


Synergy Quilt

camira

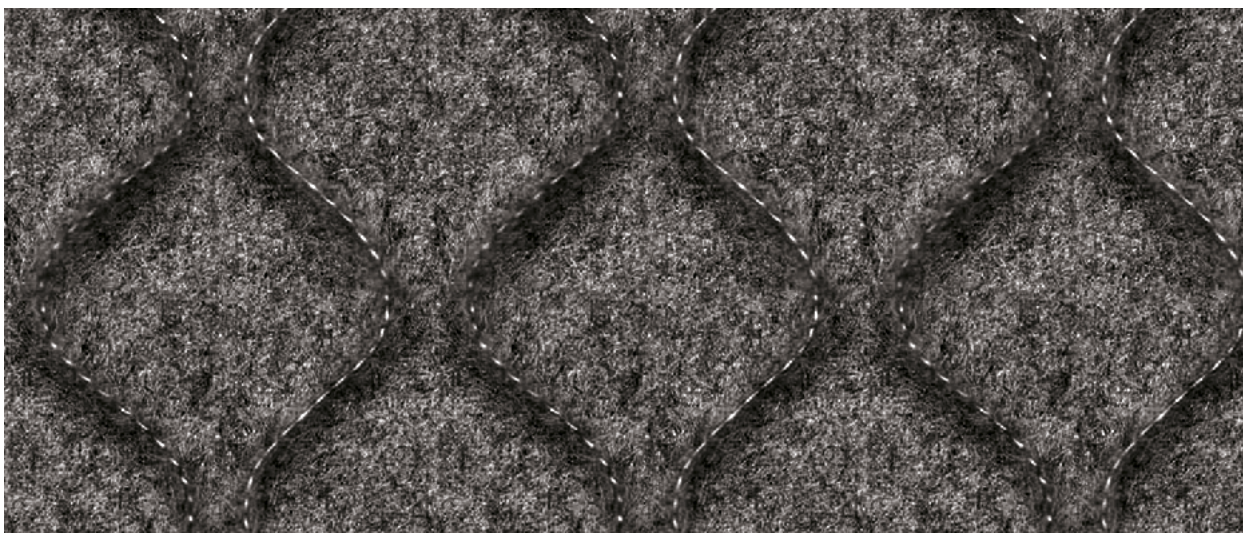
Photographic fabric scans are not color accurate. Always request actual fabric samples before ordering.



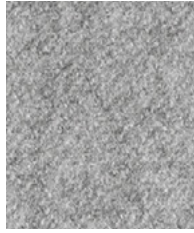
Channel



Chevron



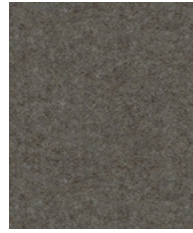
Hourglass



Serendipity
Channel QSC08 (White thread)
Chevron QSV08 (White thread)
Hourglass QSH08 (White thread)



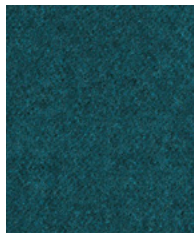
Mutual
Channel QSC84 (Black thread)
Chevron QSV84 (Black thread)
Hourglass QSH84 (Black thread)



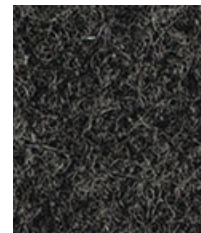
Chemistry
Channel QSC35 (Black thread)
Chevron QSV35 (Black thread)
Hourglass QSH35 (Black thread)



Support
Channel QSC55 (White thread)
Chevron QSV55 (White thread)
Hourglass QSH55 (White thread)



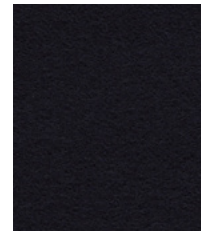
Group
Channel QSC59 (Black thread)
Chevron QSV59 (Black thread)
Hourglass QSH59 (Black thread)



Mix
Channel QSC17 (Black thread)
Chevron QSV17 (Black thread)
Hourglass QSH17 (Black thread)



Alike
Channel QSC62 (Black thread)
Chevron QSV62 (Black thread)
Hourglass QSH62 (Black thread)



Sync
Channel QSC69 (Black thread)
Chevron QSV69 (Black thread)
Hourglass QSH69 (Black thread)

Choose your Synergy Quilt design, from Channel, Chevron and Hourglass. All are available in the eight colorways shown. Lighter shades are stitched with white thread and darker shades are stitched with black thread. Stitch repeat approximately 1.96 inches across all styles.



Task seating



Lounge seating



Panels



Year guarantee

Synergy Quilt is a wide width, quilted version of our soft-handle wool blend fabric, Synergy. Foam backing and wadding form the density of the quilt, with lighter shades being stitched in white thread and darker shades stitched in black thread, to create Channel, Chevron or Hourglass patterns.



Synergy Quilt meets the ACT voluntary Performance Guidelines and is classified for Heavy Duty Upholstery.

Technical information

EN

Composition

95% Pure New Wool,
5% Nylon with Polyester and Polyurethane foam backing

Width

65 inches minimum

Weight

20^{1/2} oz/sq yd ±5% (37 oz/running yd ±5%)

Stitch Repeat

1.96 inches ±5%

Abrasion Resistance*

ASTM D4966 Martindale method, Heavy Duty Upholstery
Independently certified to ≥100,000 cycles
Covered by a full and comprehensive 5 year guarantee (full details available)

Flammability

California Technical Bulletin 117 - 2013
NFPA 260 + UFAC Class 1
BS 7176 Low Hazard
ASTM E84 Class 2 or B (Adhered)
ASTM E84 Class 2 or B (Un-adhered)
Note: Flammability performance is dependent on components used. Our certificates show what substrates have been used in our tests. For composite tests customers must ensure their complete furniture meets the necessary standards.

Color Fastness to Light

AATCC-16 (40 hours) Class 4

Color Fastness to Crocking

AATCC-8 (Dry: 4, Wet: 3)

Cleaning

W/S

Clean with a water-based cleaning agent or solvent: Depending on the stain, you can use a dry-cleaning solvent, the foam of a mild detergent, or upholstery shampoo.

*Abrasion test results exceeding ACT Performance Guidelines are not an indicator of product lifespan. Multiple factors affect fabric durability and appearance retention. We're confident in the durability of our products so we provide a robust 10 year guarantee (full details available). This product is externally certified, details of which are on our website and available from our customer services team. Batch to batch variations in shade may occur within commercial tolerances. We reserve the right to alter technical specifications without notice. The Unregistered Design Rights and the Copyright in all designs are the exclusive property of Camira Fabrics Limited.

F

Composition

95% Laine Vierge,
5% Polyamide avec Polyester et mousse Polyuréthane

Largeur

65 pouces minimum

Poids

20^{1/2} oz/sq yd ±5% (37 oz/rd.lin ±5%)

Répétition de points de couture

1.96 inches ±5%

Résistance à l'abrasion*

ASTM D4966 Martindale method, Heavy Duty Upholstery
Certificat indépendant ≥100,000 cycles
Avec une garantie totale de durabilité de 5 ans (renseignements complémentaires disponibles)

Flammabilité

California Technical Bulletin 117 - 2013
NFPA 260 + UFAC Class 1
BS 7176 Low Hazard
ASTM E84 Class 2 or B (Adhered)
ASTM E84 Class 2 or B (Un-adhered)
Notez: La performance de flammabilité dépend des composants utilisées. Nos certificats indiquent les substrats utilisés dans nos tests. Pour les tests composites, les clients doivent s'assurer que leurs meubles complets satisfont aux normes nécessaires

Solidité à la Lumière

AATCC-16 (40 heures) Class 4

Solidité à la Crocking

AATCC-8 (Mouillé: 4, Sec: 3)

Nettoyage

W/S

Nettoyer avec un produit d'entretien à base d'eau: en fonction de la tâche, vous pouvez nettoyer à sec, à l'aide d'un détergent ou bien avec du shampooing pour meubles.

*Les résultats des tests d'abrasion dépassant les directives de performance ACT ne sont pas un indicateur de la durée de vie du produit. De multiples facteurs affectent la durabilité du tissu et la conservation de son apparence. Nous sommes confiants dans la durabilité de nos produits, nous offrons donc une solide garantie de 10 ans (tous les détails sont disponibles). Ce produit est certifié en externe, dont les détails sont sur notre site Web et disponible auprès de notre équipe de service à la clientèle. Des variations de teinte d'un lot à l'autre peuvent se produire dans les tolérances commerciales. Nous nous réservons le droit de modifier les spécifications techniques sans préavis. Les droits de conception non enregistrés et le droit d'auteur sur toutes les conceptions sont la propriété exclusive de Camira Fabrics Limited.

ES

Composición

95% Lana Virgen,
5% Poliamida, con base sustrato hecho de Poliester y Poliuretano

Ancho

65 pulgadas mínimo

Peso

20^{1/2} oz/sq yd ±5% (37 oz/lin.y ±5%)

Puntada repetida

1.96 inches ±5%

Resistencia a la abrasión*

ASTM D4966 Martindale method, Heavy Duty Upholstery
independientemente del certificado de ≥100,000 ciclos
Con garantía total de uso 5 años
(más información disponible bajo consulta)

Inflamabilidad

California Technical Bulletin 117 - 2013
NFPA 260 + UFAC Class 1
BS 7176 Low Hazard
ASTM E84 Class 2 or B (Adhered)
ASTM E84 Class 2 or B (Un-adhered)
Nota: El rendimiento de la inflamabilidad depende de los componentes usados. Nuestros certificados muestran qué substratos se han usado en nuestros tests. Para tests compuestos nuestros clientes deben asegurar si sus muebles cumplen la normativa al uso.

Solidez a la Luz

AATCC-16 (40 horas) Class 4

Solidez al Rozamiento

AATCC-8 (Húmedo: 4, Seco: 3)

Limpieza

W/S

Lavar con un producto de limpieza neutro o solvente: en función de la suciedad o mancha, se puede limpiar con un producto de limpieza en seco, espuma templada o producto de limpieza de sofás.

*Los resultados de las pruebas de abrasión que exceden las pautas de rendimiento ACT no son un indicador de la vida útil del producto. Múltiples factores afectan la durabilidad y aspecto del tejido. Confiamos en la durabilidad de nuestros productos, por lo que ofrecemos una sólida garantía de 10 años (detalles completos disponibles). Este producto se certifica externamente, todos los detalles están disponibles en nuestra web y el departamento de atención al cliente se los puede facilitar. Pequeñas variaciones de color entre diferentes tintadas son posibles dentro de las tolerancias comerciales. Nos reservamos el derecho a modificar las especificaciones técnicas sin previo aviso. Los derechos de diseño no registrados y el copyright de todos nuestros diseños son propiedad exclusiva de Camira Fabrics Limited.