



Wired

**Color options on
Wired wool plush**

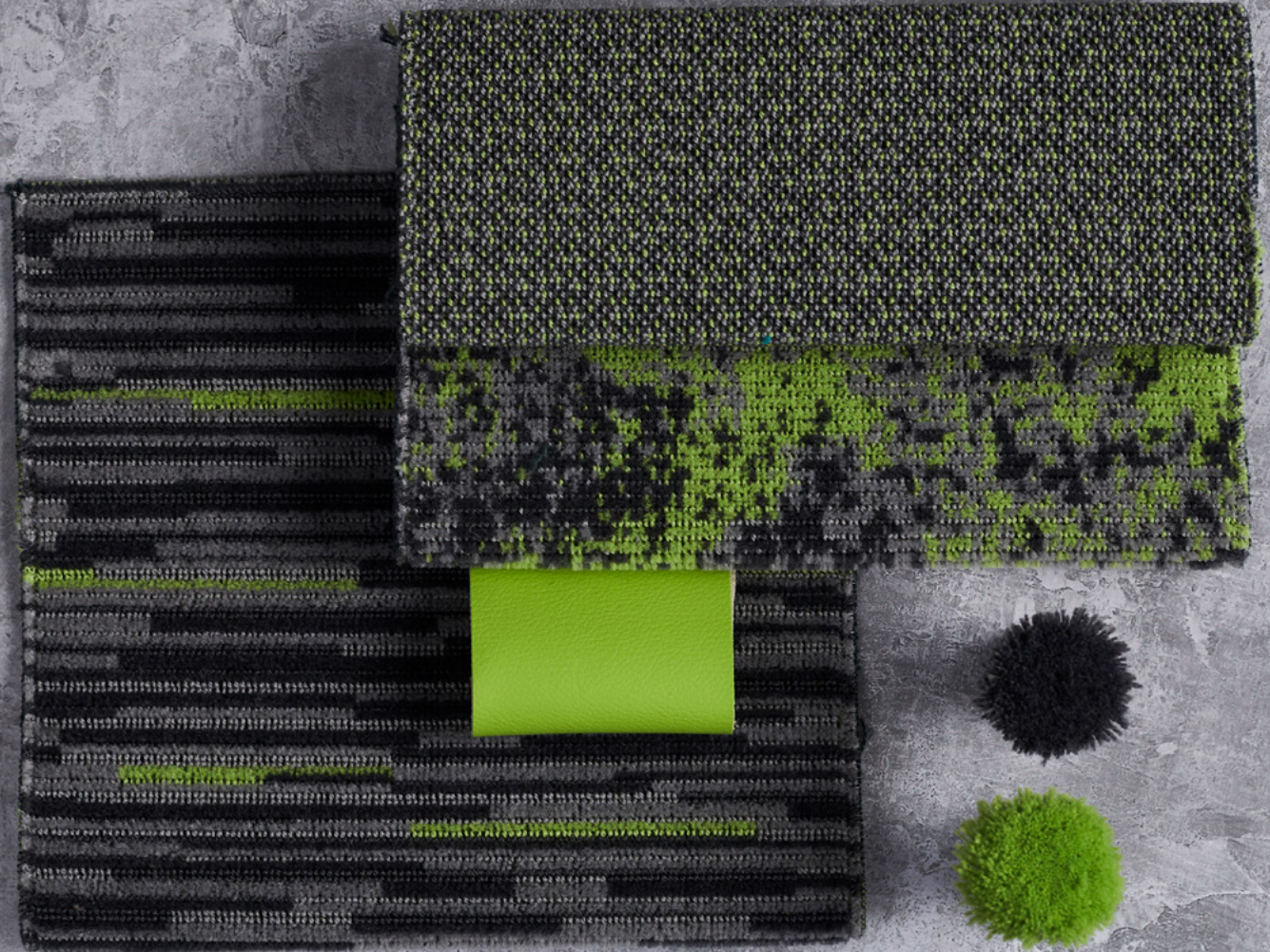
camira



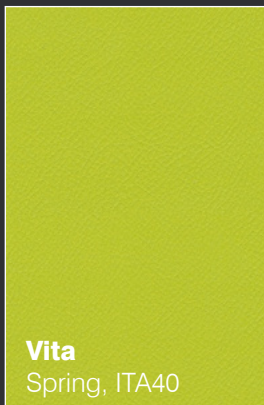
**Designed for detail,
made for impact,
Wired is a fabric with
hidden depth and
immediate appeal.**

With an irresistibly tactile finish created through contrasting pile heights, and small scale patterns accented by flashes of color, each design in the collection blends refinement with modernity, unique aesthetics with high performance.

A truly timeless textile, Wired is available in an array of contemporary and classic color options. From Electric Lime to Ferrari Red, there is an option for every transport interior.



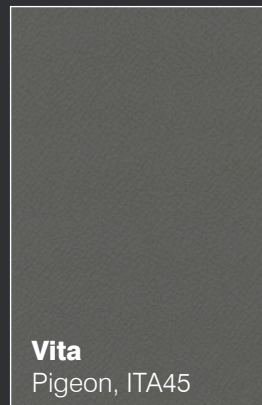
Electric Lime



Vita
Spring, ITA40

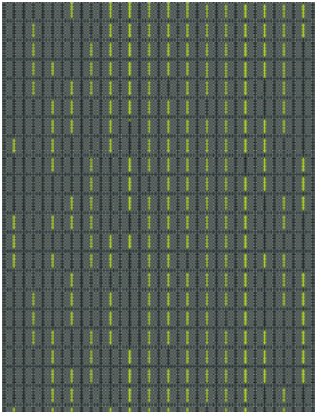


Vita
Beetle, ITA47

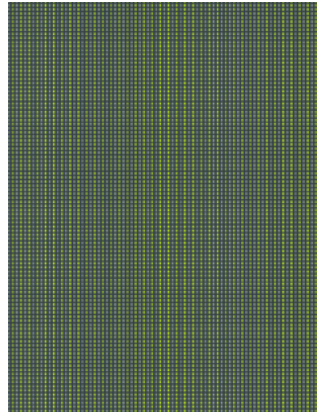


Vita
Pigeon, ITA45

**Color
coordinates**



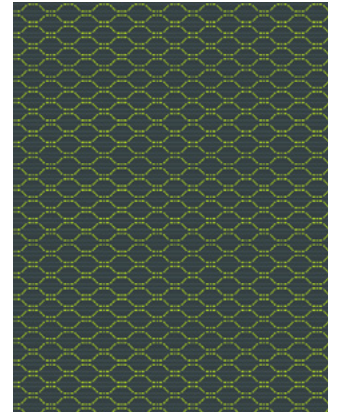
EFZC45 (Q150)



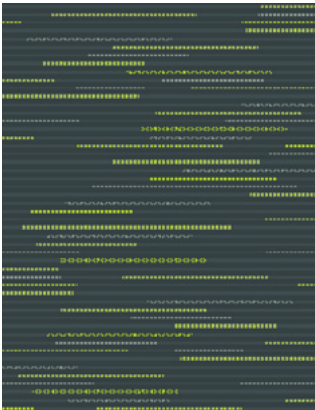
EGAC45 (Q150)



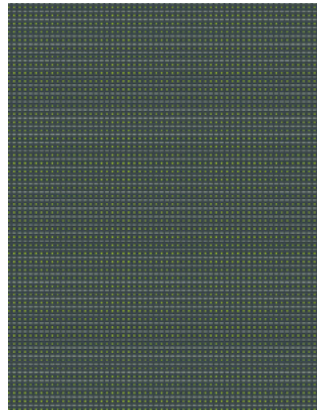
EGBC45 (Q150)



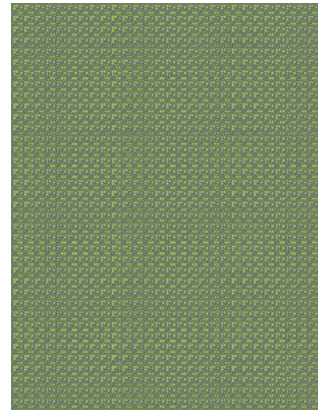
EGCC45 (Q150)



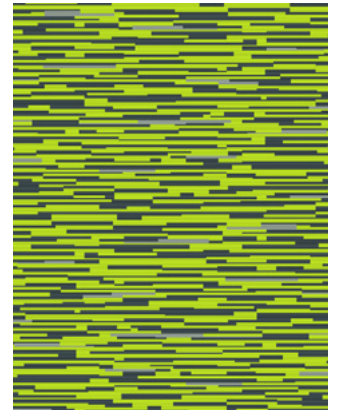
EGDC45 (Q150)



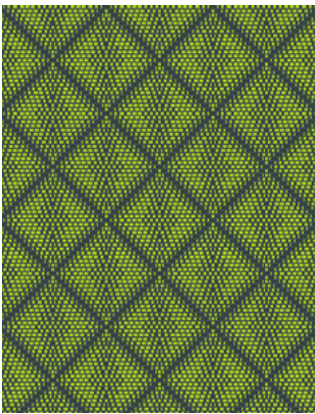
EGEC45 (Q150)



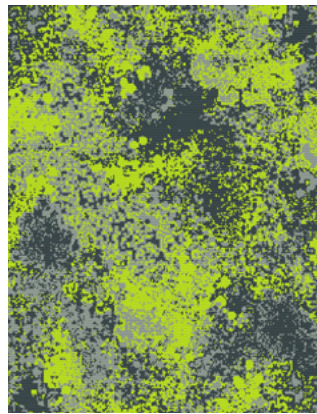
EGGC45 (Q66)



EGHC45 (Q150)



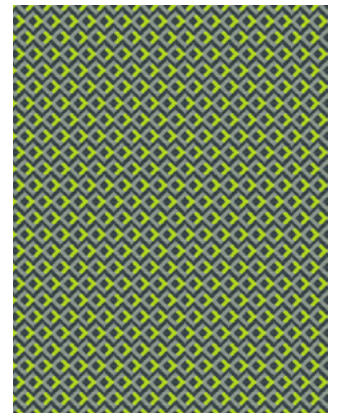
EGIC45 (Q150)



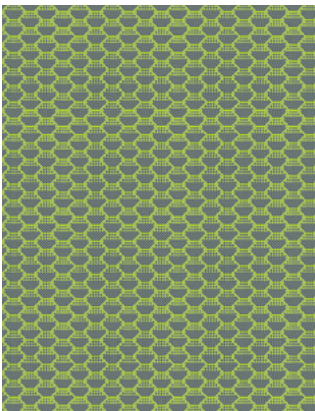
EGJC45 (Q150)



EGKC45 (Q150)



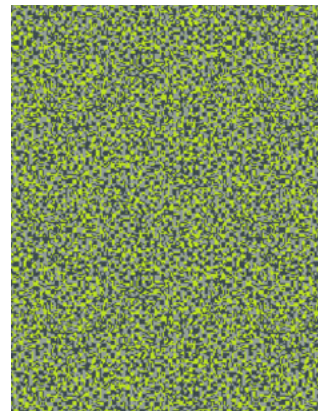
EGMC45 (Q150)



EGFC45 (Q150)
EGNC45 (Q66)



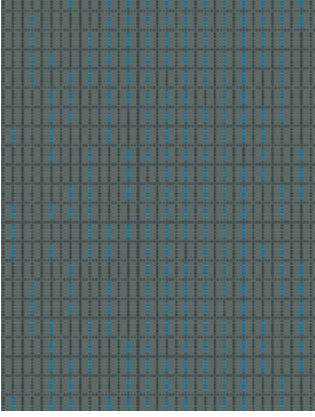
EGOC45 (Q150)



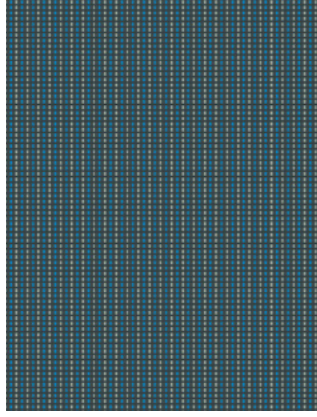
EGSC45 (Q66)



EGLC45 (Q150)



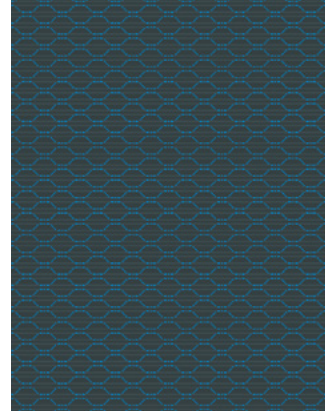
EFZC46 (Q150)



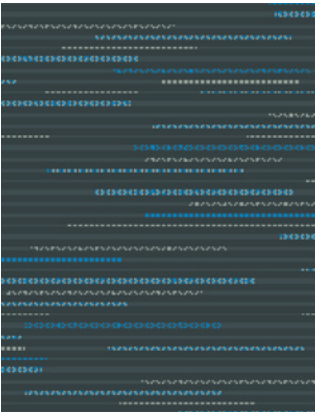
EGAC46 (Q150)



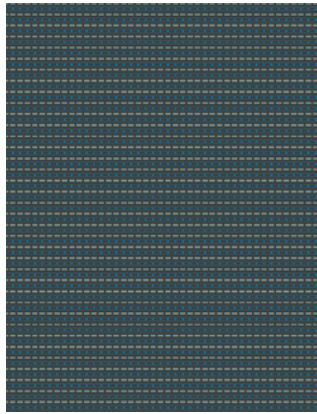
EGBC46 (Q150)



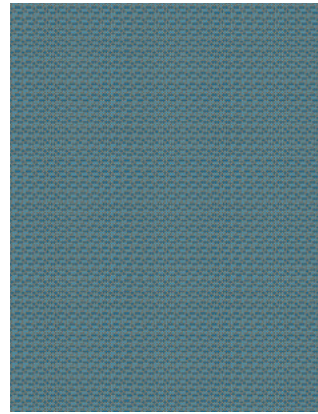
EGCC46 (Q150)



EGDC46 (Q150)



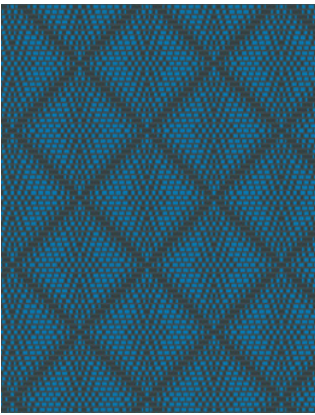
EGEC46 (Q150)



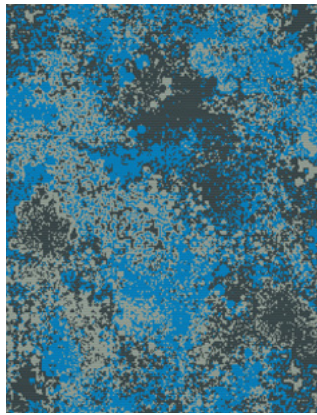
EGGC46 (Q66)



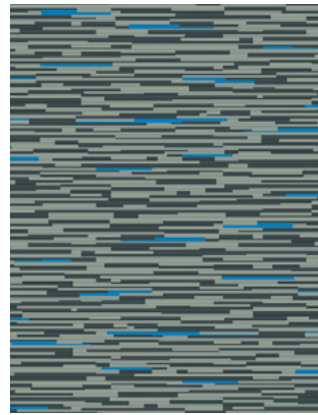
EGHC46 (Q150)



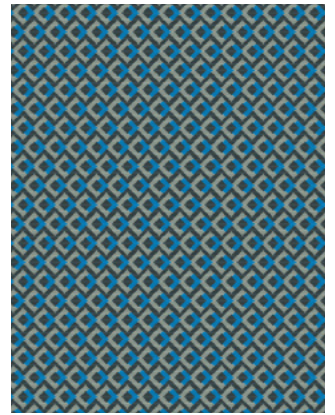
EGIC46 (Q150)



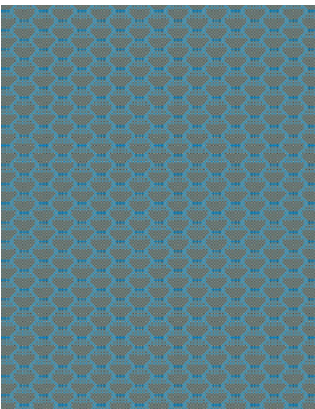
EGJC46 (Q150)



EGKC46 (Q150)



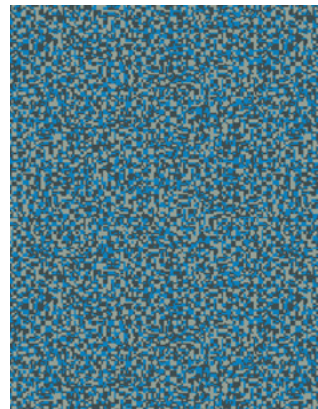
EGMC46 (Q150)



EGFC46 (Q150)
EGNC46 (Q66)



EGOC46 (Q150)



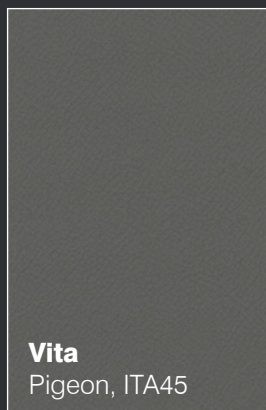
EGSC46 (Q66)



EGLC46 (Q150)



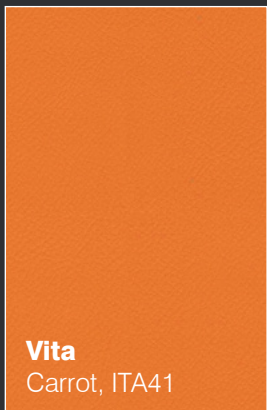
Pacific Blue



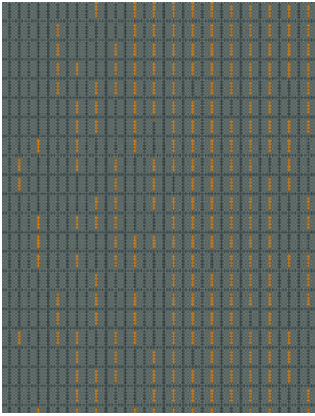
**Color
coordinates**



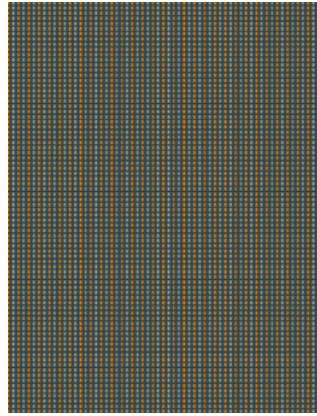
Amber



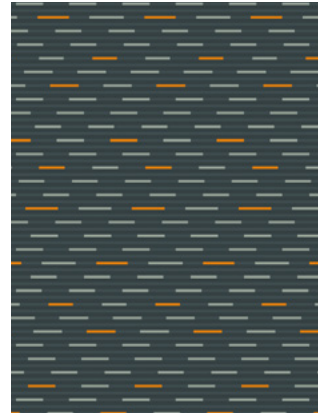
**Color
coordinates**



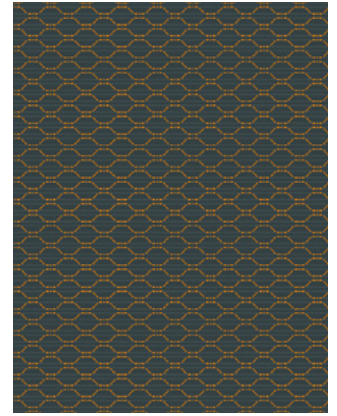
EFZC44 (Q150)



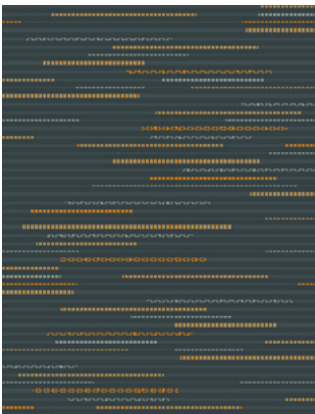
EGAC44 (Q150)



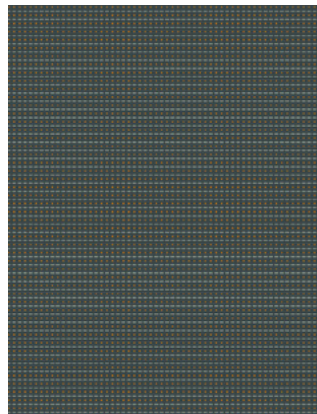
EGBC44 (Q150)



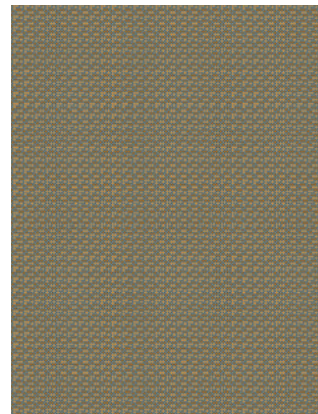
EGCC44 (Q150)



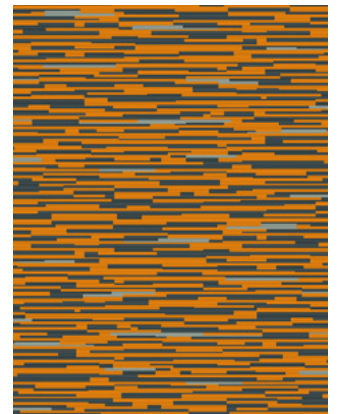
EGDC44 (Q150)



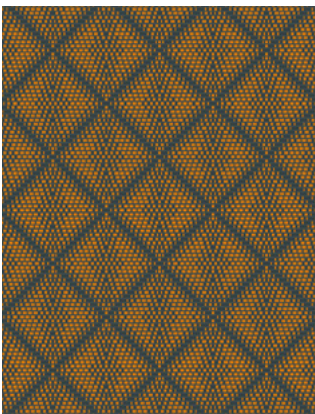
EGEC44 (Q150)



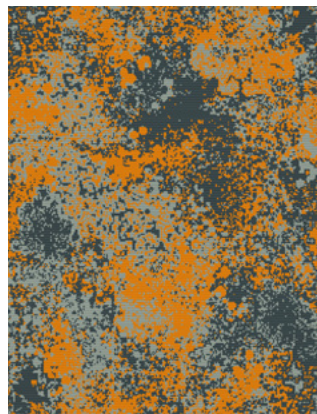
EGGC44 (Q66)



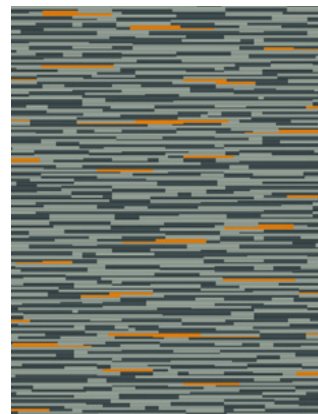
EGHC44 (Q150)



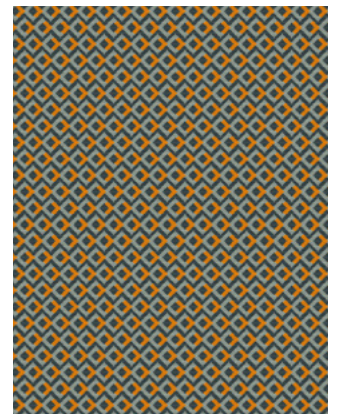
EGIC44 (Q150)



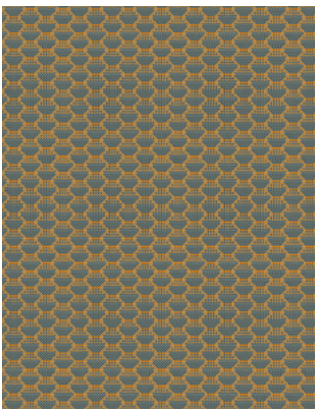
EGJC44 (Q150)



EGKC44 (Q150)



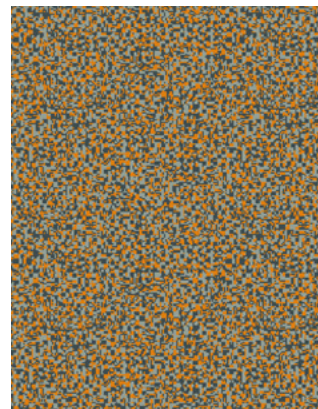
EGMC44 (Q150)



EGFC44 (Q150)
EGNC44 (Q66)



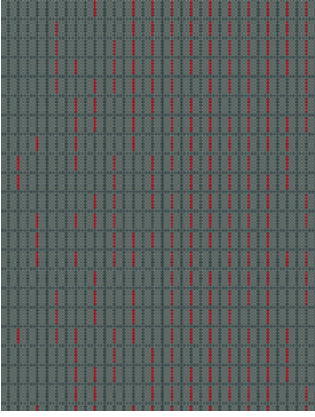
EGOC44 (Q150)



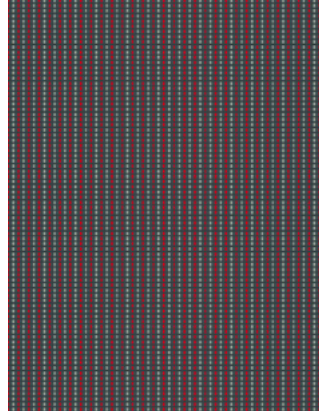
EGSC44 (Q66)



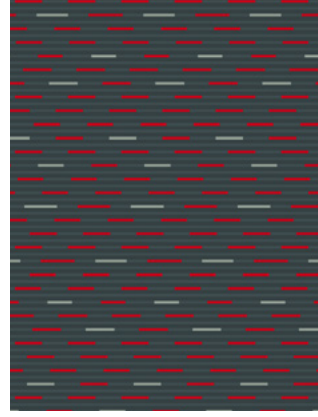
EGLC44 (Q150)



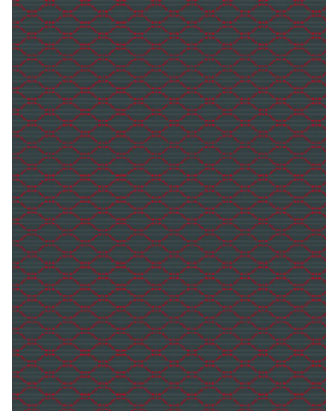
EFZC42 (Q150)



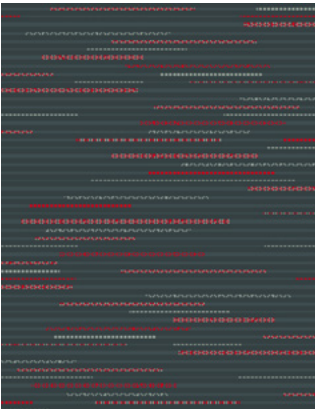
EGAC42 (Q150)



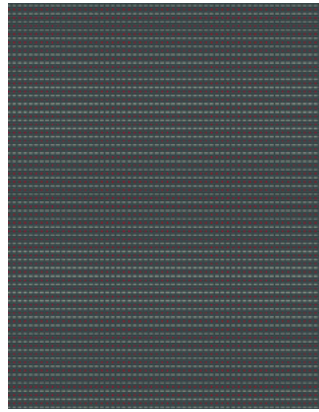
EGBC42 (Q150)



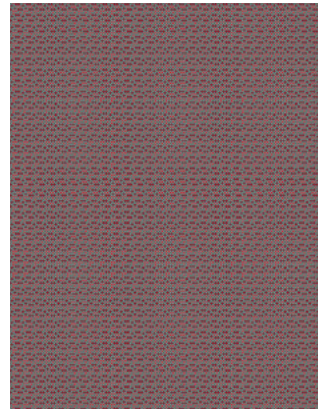
EGCC42 (Q150)



EGDC42 (Q150)



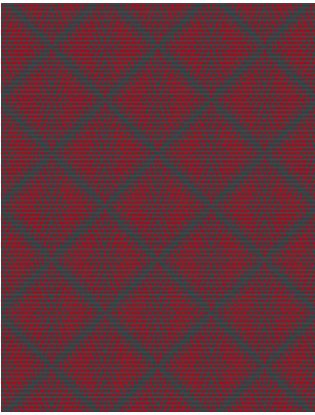
EGEC42 (Q150)



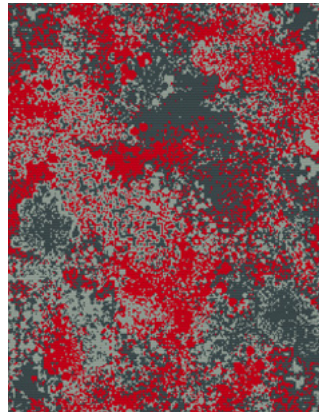
EGGC42 (Q66)



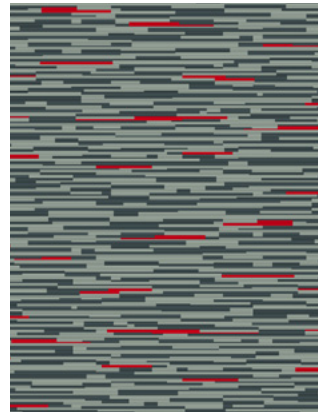
EGHC42 (Q150)



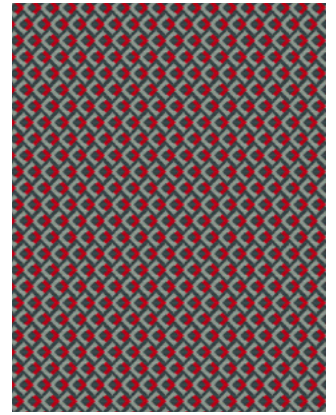
EGIC42 (Q150)



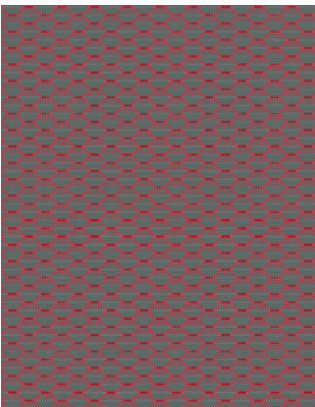
EGJC42 (Q150)



EGKC42 (Q150)



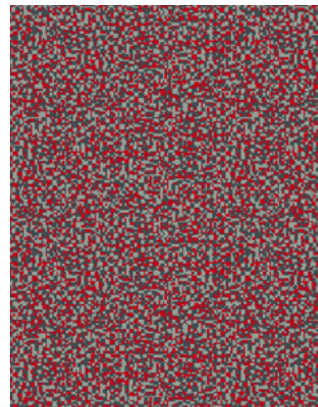
EGMC42 (Q150)



EGFC42 (Q150)
EGNC42 (Q66)



EGOC42 (Q150)



EGSC42 (Q66)



EGLC42 (Q150)



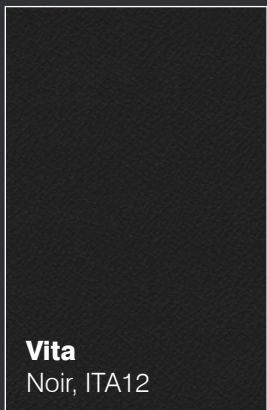
Ferrari Red



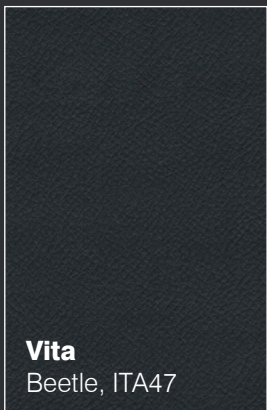
**Color
coordinates**



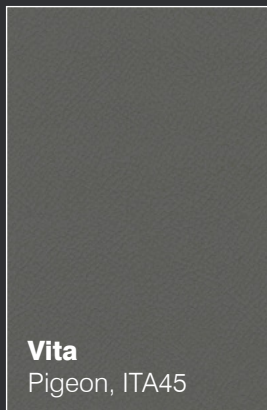
Classic Gray



Vita
Noir, ITA12

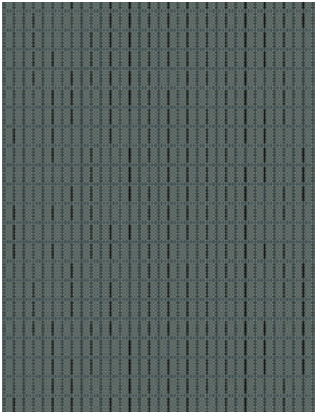


Vita
Beetle, ITA47

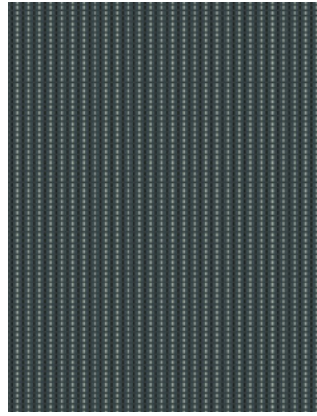


Vita
Pigeon, ITA45

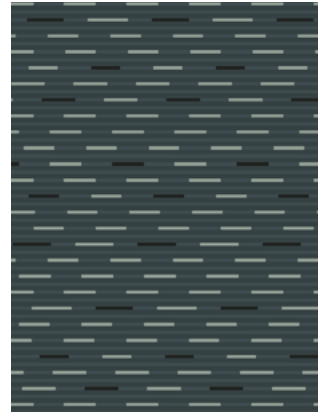
**Color
coordinates**



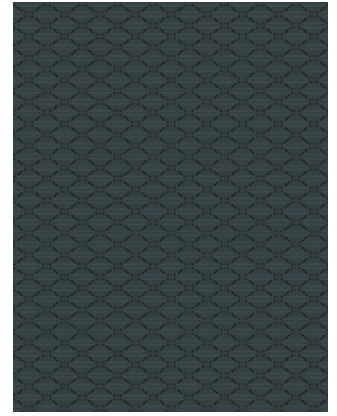
EFZC43 (Q150)



EGAC43 (Q150)



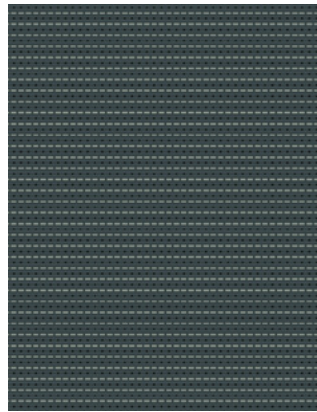
EGBC43 (Q150)



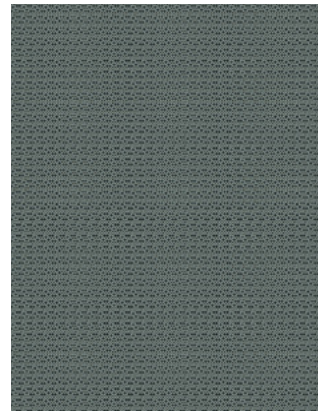
EGCC43 (Q150)



EGDC43 (Q150)



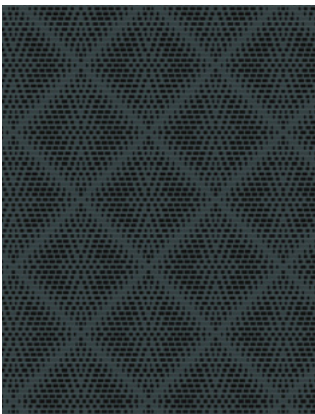
EGEC43 (Q150)



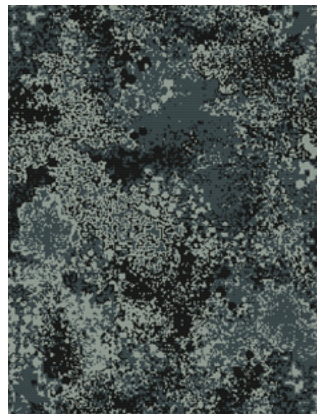
EGGC43 (Q66)



EGHC43 (Q150)



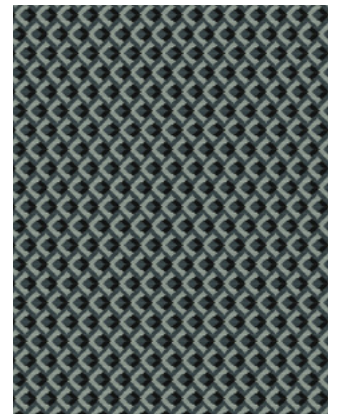
EGIC43 (Q150)



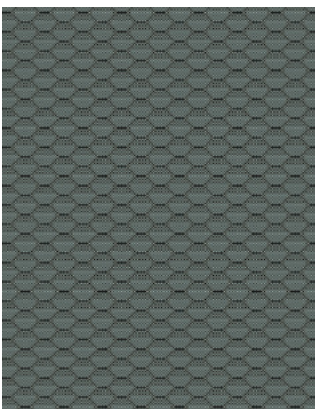
EGJC43 (Q150)



EGKC43 (Q150)



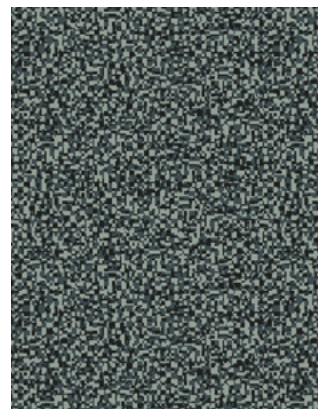
EGMC43 (Q150)



EGFC43 (Q150)
EGNC43 (Q66)



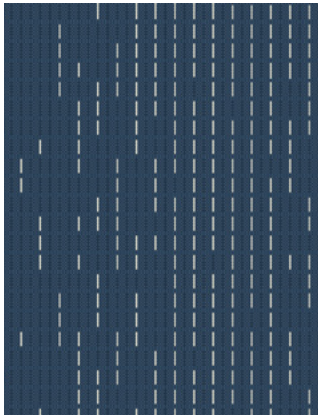
EGOC43 (Q150)



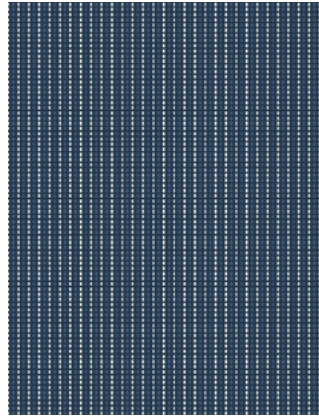
EGSC43 (Q66)



EGLC43 (Q150)



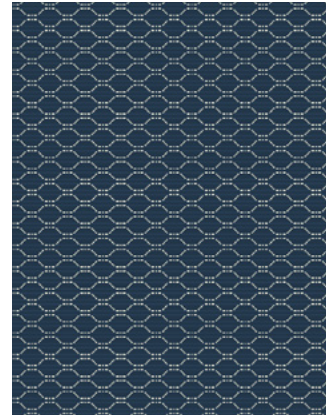
EFZC47 (Q150)



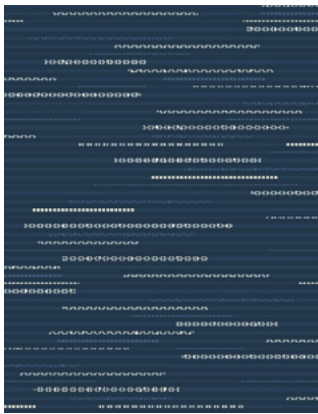
EGAC47 (Q150)



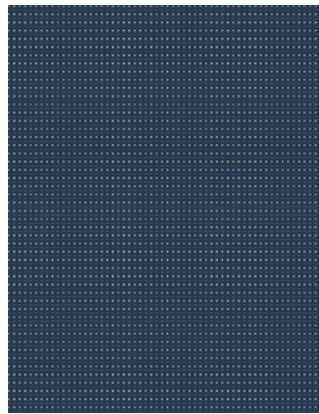
EGBC47 (Q150)



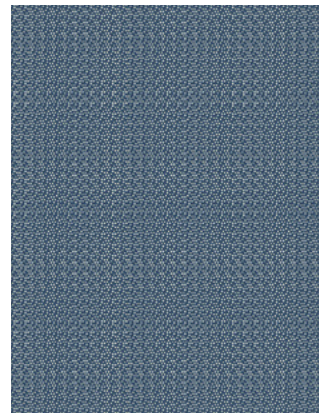
EGCC47 (Q150)



EGDC47 (Q150)



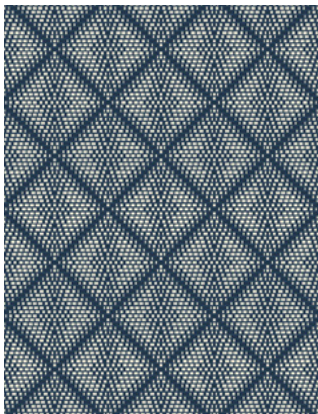
EGEN47 (Q150)



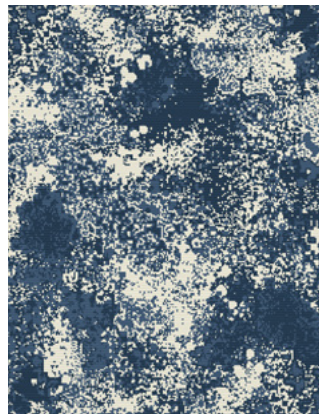
EGGC47 (Q66)



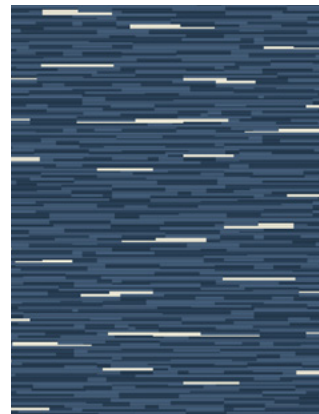
EGHC47 (Q150)



EGIC47 (Q150)



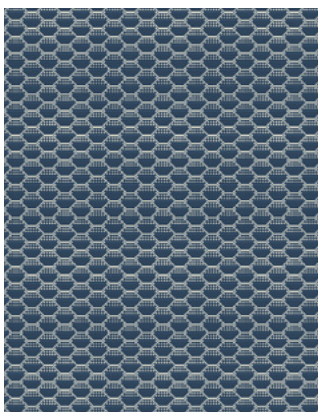
EGJC47 (Q150)



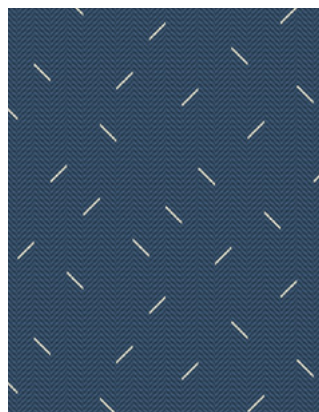
EGKC47 (Q150)



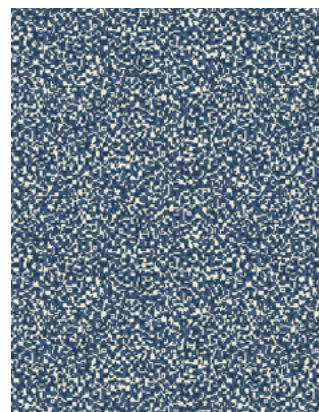
EGMC47 (Q150)



EGFC47 (Q150)
EGNC47 (Q66)



EGOC47 (Q150)



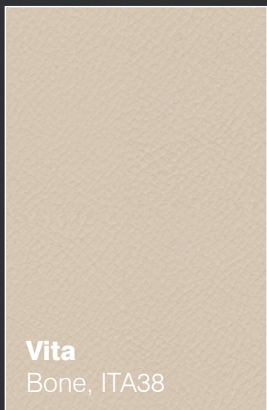
EGSC47 (Q66)



EHCC47 (Q150)



Denim



Vita
Bone, ITA38



Vita
Porcelain, ITA15

**Color
coordinates**

Specification

Wired



Transport seating



Year guarantee

Wired is an intricately detailed fabric collection which subtly moves from one surface texture to another through a carefully constructed mix of pile heights and handles. Some areas of the fabric surface are presented as all cut moquette and others in all loop to create a complex textural transport upholstery which combines both unique aesthetics and high performance.

The collection is designed around small scale textures and patterns with highlight accent colors of muted blues, greens, subdued orange and vivid red set against darker gray grounds. The design effects span illusory, graduated and delicate dappling to set a tone of poise and refinement.

Technical Information

Composition

Pile: 85% Wool, 15% Nylon
Ground: 100% Cotton

Width

59 inches minimum

Weight

1001 Group: 23 oz/sq. yd $\pm 5\%$
745 Group: 24^{1/5} oz/sq. yd $\pm 5\%$

Abrasion Resistance

$\geq 80,000$ Martindale cycles
(ISO 12947)

Flammability

FMVSS 302

Note: flammability performance is dependent on components used FR performance is based on the FR treatment applied

Color Fastness to Light

6 (ISO 105 - B02)

Color Fastness to Crocking

Wet: 4, Dry: 4 (ISO 105 - X12)

Cleaning

Vacuum regularly. Wipe clean with a damp cloth or shampoo using proprietary upholstery shampoo.

[View Online](#)



