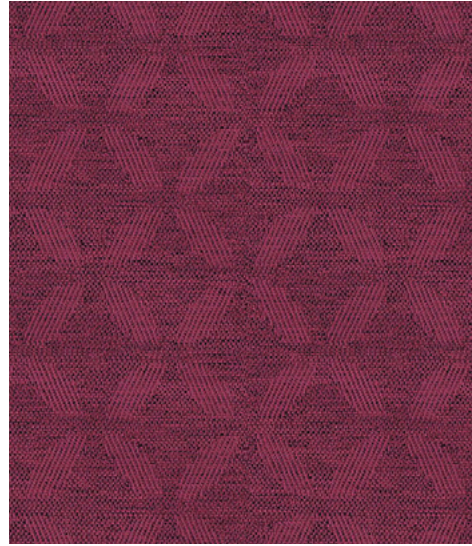


# Halcyon Collection

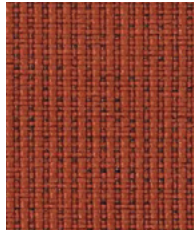
**camira**



**Blossom**  
Tigerlily HPB11



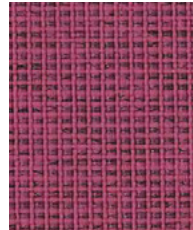
**Aspen**  
Petal HPA01



**Cedar**  
Tigerlily HPC11



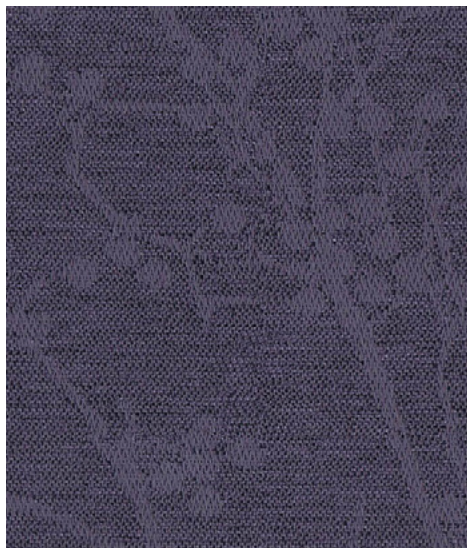
**Aspen**  
Tigerlily HPA11



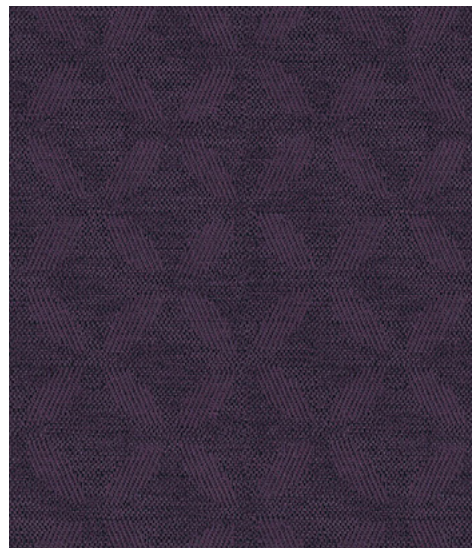
**Cedar**  
Petal HPC01



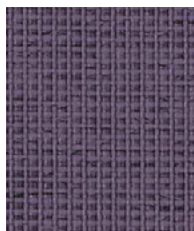
**Blossom**  
Petal HPB01



**Blossom**  
Lavender HPB02



**Aspen**  
Berry HPA03



**Cedar**  
Lavender HPC02



**Aspen**  
Lavender HPA02

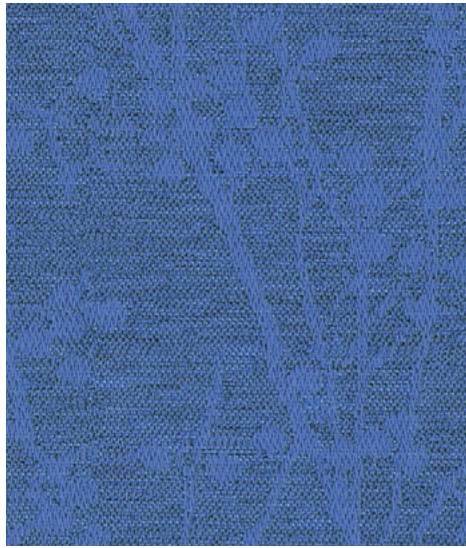


**Cedar**  
Berry HPC03



**Blossom**  
Berry HPB03

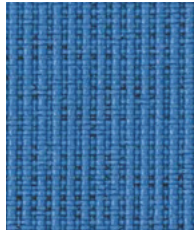




**Blossom**  
Dewdrop HPB05



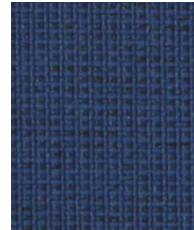
**Aspen**  
Brook HPA04



**Cedar**  
Dewdrop HPC05



**Aspen**  
Dewdrop HPA05



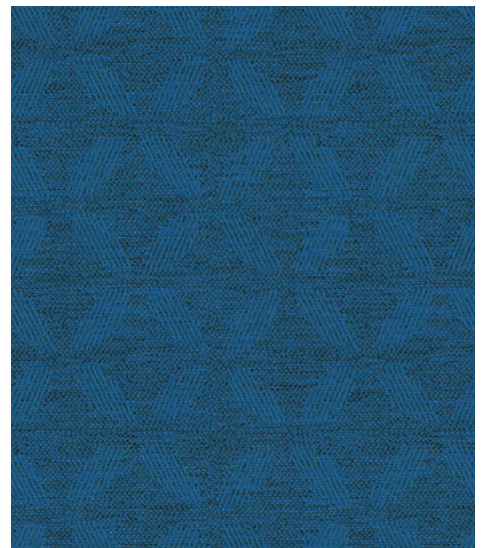
**Cedar**  
Brook HPC04



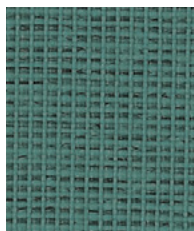
**Blossom**  
Brook HPB04



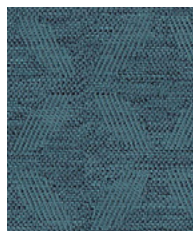
**Blossom**  
Lake HPB09



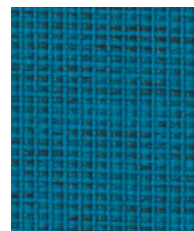
**Aspen**  
Botanic HPA06



**Cedar**  
Lake HPC09



**Aspen**  
Lake HPA09



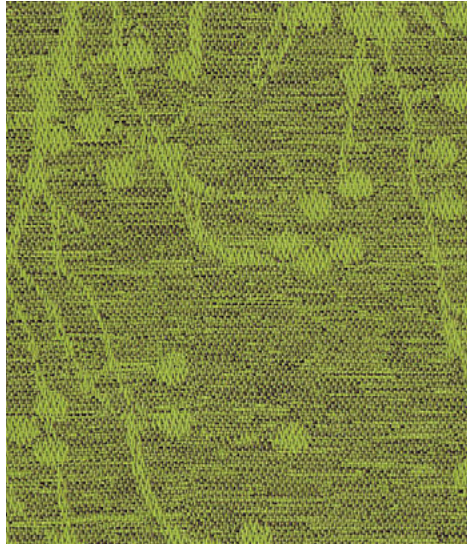
**Cedar**  
Botanic HPC06



**Blossom**  
Botanic HPB06



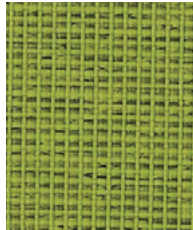
Photographic fabric scans are not color accurate. Always request actual fabric samples before ordering.



**Blossom**  
Gooseberry HPB07



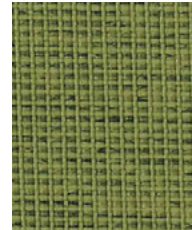
**Aspen**  
Evergreen HPA08



**Cedar**  
Gooseberry HPC07



**Aspen**  
Gooseberry HPA07



**Cedar**  
Evergreen HPC08



**Blossom**  
Evergreen HPB08



**Blossom**  
Almond HPB10



**Aspen**  
Nutmeg HPA12



**Cedar**  
Almond HPC10



**Aspen**  
Almond HPA10



**Cedar**  
Nutmeg HPC12



**Blossom**  
Nutmeg HPB12



The Halcyon Collection - fresh and innovative performance fabrics, engineered for end-use areas which require extra protection. All bleach cleanable and environmentally conscious too.

Powered by Camira TriOnyx™ – a soft-effect finish which ensures fabrics are:

- 1) stain repellent and waterproof
- 2) permanently anti-microbial using Maedical
- 3) flame retardant to the highest standards.



Halcyon Collection meets the ACT voluntary Performance Guidelines and is classified for Heavy Duty Upholstery.



## Technical information

### EN

#### Composition

100% Polyester face with TriOnyx™ performance backcoat

#### Environment

Non metallic dyestuffs

#### Width

54 inches minimum

#### Weight

Aspen/Blossom: 12 oz/sq yd ±5% (18 oz/running yd ±5%)  
Cedar: 13 oz/sq yd ±5% (20 oz/running yd ±5%)

#### Pattern Repeat

Aspen: Width 1<sup>35</sup> inches, Length 1<sup>12</sup> inches  
Blossom: Width 15<sup>15</sup> inches, Length 7<sup>110</sup> inches

#### Abrasion Resistance\*

ASTM D4157 Wyzenbeek, Heavy Duty Upholstery  
Independently certified to ≥75,000 double rubs  
Covered by a full and comprehensive 10 year guarantee (full details available)

#### Flammability

California Technical Bulletin 117 - 2013  
NFPA 260 + UFAC Class 1  
BS 7176 Medium Hazard  
IMO FTP Code (Part 8)

*Note: Flammability performance is dependent on components used. Our certificates show what substrates have been used in our tests. For composite tests customers must ensure their complete furniture meets the necessary standards.*

#### Color Fastness to Light

AATCC-16 (40 hours) Class 4

#### Color Fastness to Crocking

AATCC-8 (Dry: 4, Wet: 3)

#### Waterproof

Hydrostatic head BS 3424 > 1 meter minimum

#### Urea Resistance

BS 3424 Part 19 no significant deterioration after 24 hrs

#### Anti-microbial / Anti-fungal

AATCC 147

#### Bleach Cleanable

ISO 105 E03 colour change 4 for dilution factor 1:4 chlorine solution

#### Cleaning

W/S

Spot clean, using the foam only from a water-based cleaning agent, such as a mild detergent or non-solvent upholstery shampoo product. For full details, see cleaning guide.

\*Abrasion test results exceeding ACT Performance Guidelines are not an indicator of product lifespan. Multiple factors affect fabric durability and appearance retention. We're confident in the durability of our products so we provide a robust 10 year guarantee (full details available). This product is externally certified, details of which are on our website and available from our customer services team. Batch to batch variations in shade may occur within commercial tolerances. We reserve the right to alter technical specifications without notice. The Unregistered Design Rights and the Copyright in all designs are the exclusive property of Camira Fabrics Limited.

This product is not suitable for upholstery methods using glue. Doing so voids any product guarantee.

### F

#### Composition

100% polyester contrecolle avec un TriOnyx™ coating haute performance

#### Écologique

Teintures non métalliques

#### Largeur

54 pouces minimum

#### Poids

Aspen/Blossom: 12 oz/sq yd ±5% (18 oz/rd.lin ±5%)  
Cedar: 13 oz/sq yd ±5% (20 oz/rd.lin ±5%)

#### Répétition du motif

Aspen: Largeur 1<sup>35</sup> pouces, Longueur 1<sup>12</sup> pouces  
Blossom: Largeur 15<sup>15</sup> pouces, Longueur 7<sup>110</sup> pouces

#### Résistance à l'abrasion\*

ASTM D4157 Wyzenbeek, Heavy Duty Upholstery  
Certificat indépendant ≥75,000 double rubs  
Avec une garantie totale de durabilité de 10 ans (renseignements complémentaires disponibles)

#### Flammabilité

California Technical Bulletin 117 - 2013  
NFPA 260 + UFAC Class 1  
BS 7176 Medium Hazard  
IMO FTP Code (Part 8)

*Notez: La performance de flammabilité dépend des composantes utilisées. Nos certificats indiquent les substrats utilisés dans nos tests. Pour les tests composites, les clients doivent s'assurer que leurs meubles complets satisfont aux normes nécessaires.*

#### Solidité à la Lumière

AATCC-16 (40 heures) Class 4

#### Solidité à la Crocking

AATCC-8 (Sec: 4, Mouillé: 3)

#### Imperméabilité

Pression hydrostatique selon la norme BS3424 > 1 mètre minimum

#### Résistance à l'urée

Pas de détérioration significative après 24h selon la norme BS3424 partie 19

#### Anti-microbial / Anti-fungal

AATCC 147

#### Nettoyable au javel

ISO 105 E03 changement de couleur 4 pour le facteur de dilution 1: 4 solution de chlore

#### Nettoyage

W/S

Spot clean, using the foam only from a water-based cleaning agent, such as a mild detergent or non-solvent upholstery shampoo product. Veuillez trouver tous les détails dans le manuel de nettoyage.

\*Les résultats des tests d'abrasion dépassant les directives de performance ACT ne sont pas un indicateur de la durée de vie du produit. De multiples facteurs affectent la durabilité du tissu et la conservation de son apparence. Nous sommes confiants dans la durabilité de nos produits, nous offrons donc une solide garantie de 10 ans (tous les détails sont disponibles). Ce produit est certifié en externe, dont les détails sont sur notre site Web et disponible auprès de notre équipe de service à la clientèle. Des variations de teinte d'un lot à l'autre peuvent se produire dans les tolérances commerciales. Nous nous réservons le droit de modifier les spécifications techniques sans préavis. Les droits de conception non enregistrés et le droit d'auteur sur toutes les conceptions sont la propriété exclusive de Camira Fabrics Limited.

Ce produit n'est pas adapté aux méthodes d'ameublement utilisant de la colle. L'utilisation de la colle annule toute garantie de ce produit.

### ES

#### Composición

Superficie 100% Poliéster ignífugo base con TriOnyx™ sellado

#### Ambiental

Tintes no metálicos

#### Ancho

54 pulgadas mínimo

#### Peso

Aspen/Blossom: 12 oz/sq yd ±5% (18 oz/lin.y ±5%)  
Cedar: 13 oz/sq yd ±5% (20 oz/lin.y ±5%)

#### Repetición en el diseño

Aspen: Ancho 1<sup>35</sup> pulgadas, Largo 1<sup>12</sup> pulgadas  
Blossom: Ancho 15<sup>15</sup> pulgadas, Largo 7<sup>110</sup> pulgadas

#### Resistencia a la abrasión\*

ASTM D4157 Wyzenbeek, Heavy Duty Upholstery  
independientemente del certificado de ≥75,000 double rubs  
Con garantía de uso 10 años (más información disponible bajo consulta)

#### Inflamabilidad

California Technical Bulletin 117 - 2013  
NFPA 260 + UFAC Class 1  
BS 7176 Medium Hazard  
IMO FTP Code (Part 8)

*Nota: El rendimiento de la inflamabilidad depende de los componentes usados. Nuestros certificados muestran qué substratos se han usado en nuestros tests. Para tests compuestos nuestros clientes deben asegurar si sus muebles cumplen la normativa al uso.*

#### Solidez a la Luz

AATCC-16 (40 horas) Class 4

#### Solidez al Rozamiento

AATCC-8 (Seco: 4, Húmedo: 3)

#### Resistente al Agua

Base Hidrostática BS 3424 > 1 metro mínimo

#### Resistencia a la Urea

BS 3424 Parte 19: deterioro insignificante tras 24 horas

#### Anti-microbial / Anti-fungal

AATCC 147

#### Posibilidad lavado con Lejía

ISO 105 E03 cambio color 4 para un factor de disolución 1:4 solución cloro

#### Limpeza

W/S

Spot clean, using the foam only from a water-based cleaning agent, such as a mild detergent or non-solvent upholstery shampoo product. Por todos los detalles vea el manual de limpieza.

\*Los resultados de las pruebas de abrasión que exceden las pautas de rendimiento ACT no son un indicador de la vida útil del producto. Múltiples factores afectan la durabilidad y aspecto del tejido. Confiamos en la durabilidad de nuestros productos, por lo que ofrecemos una sólida garantía de 10 años (detalles completos disponibles). Este producto se certifica externamente, todos los detalles están disponibles en nuestra web y el departamento de atención al cliente se los puede facilitar. Pequeñas variaciones de color entre diferentes tintadas son posibles dentro de las tolerancias comerciales. Nos reservamos el derecho a modificar las especificaciones técnicas sin previo aviso. Los derechos de diseño no registrados y el copyright de todos nuestros diseños son propiedad exclusiva de Camira Fabrics Limited.

Este tejido no es adecuado para tapizar usando cola. No damos garantía alguna del tejido si se usa cola.